



<b>1.Hard- and software requirements.....</b>	<b>3</b>
1.1 Hardware requirements.....	3
1.2 Software requirements.....	3
1.2.1 eWON related software.....	3
1.2.2 Schneider Electric related software.....	3
1.3 eWON Firmware Version.....	3
<b>2.Objective.....</b>	<b>4</b>
<b>3.Typical configuration setup.....</b>	<b>5</b>
<b>4.Prerequisite: Determining suitable IP addresses.....</b>	<b>6</b>
4.1 Internet connection using the WAN Interface.....	6
4.2 Internet connection by modem (GSM, PSTN, ADSL).....	7
4.3 For proper routing, remember.....	7
<b>5.Reaching your eWON through the Internet.....</b>	<b>8</b>
5.1 Step 1: Setting IP address of eWON LAN.....	8
5.2 Step 2: Configure eWON for Internet connection.....	11
5.3 Step 3: Creating the eWON in your Talk2M account.....	14
5.4 Step 4: Getting the Talk2M activation key for the eWON.....	17
5.5 Step 5: Configuring your eWON to connect to Talk2M.....	19
5.6 Step 6: Connecting the eWON remotely.....	22
5.7 Step 7: Terminating the remote connection.....	24
<b>6.Linking eWON and PLC.....</b>	<b>25</b>
6.1 Local link capabilities.....	25
6.2 Serial link (Unitelway) configuration.....	25
6.3 Ethernet link configuration.....	28
<b>7.PLC software mapping configuration.....</b>	<b>31</b>
7.1 Understanding XIP.....	31
7.2 XIP Driver Configuration for serial connection.....	31
7.3 XIP Driver Configuration for Ethernet connection.....	33
<b>8.Establishing remote connection.....</b>	<b>35</b>
<b>9.Troubleshooting.....</b>	<b>37</b>
9.1 Cannot reach the PLC on its Unitelway port?.....	37
9.2 Cannot reach PLC by Ethernet ?.....	37
<b>10.Appendix 1 – Specifics for Modem connections.....</b>	<b>39</b>
10.1 General.....	39
10.2 Configuring the eWON for Internet connection (Step 2).....	39
10.3 Creating the eWON in your Talk2M account (Step 3).....	41
10.4 Connecting the eWON remotely (Step 6).....	41
10.5 Terminating the remote connection (Step 7).....	42
<b>11.Appendix 2 – eWON as Gateway in PLC.....</b>	<b>43</b>
<b>12.Appendix 3 – Security aspects.....</b>	<b>45</b>
<b>13.Appendix 4 – Unitelway cable.....</b>	<b>46</b>
Revision history.....	48

# 1. Hard- and software requirements

## 1.1 Hardware requirements

In order to follow this guide you'll need:

- 1 eWON with VPN capabilities (for example eWON 2101CD with integrated modem or a 2005CD with second Ethernet interface)
- 1 Schneider Electric PLC Modicon Micro or Premium Series or equivalent featuring Unitelway and/or Ethernet interface
- PC suitable to configure the eWON and the PLC

## 1.2 Software requirements

### 1.2.1 eWON related software

- ◆ **Web browser** – Internet Explorer<sup>i</sup> or Firefox<sup>ii</sup> to configure the embedded eWON parameters.
- ◆ **eBuddy** – eWON detection and firmware maintenance utility  
<http://support.ewon.biz/software.htm>
- ◆ **eCatcher** – VPN tunneling utility  
<http://support.ewon.biz/software.htm>  
Note: this utility will be used to create the Talk2M account and to connect to your eWON remotely.

### 1.2.2 Schneider Electric related software

- ◆ **PL7 PRO®** <sup>iii</sup> software including the **XIP Driver** and/or **XWAY Drivers Manager**. The version of the PL7 PRO® software must allow the use of the TCP/IP interface (version 4.1 or higher).

## 1.3 eWON Firmware Version

Successfully following these guidelines requires an eWON firmware version 6.1s2 or higher. The eBuddy application allows you to upgrade your eWON firmware if required.

## 2. Objective

The objective of this document is to guide you through the steps required to enable remote access of your Schneider Electric PLCs.

The remote access setup is composed of 4 different parts:

- ◆ Communicating with your eWON through the Internet
- ◆ Connecting your eWON with your Schneider Electric PLC
- ◆ Configuring your Schneider Electric software to correctly communicate through the eWON.
- ◆ Accessing your PLC through the Internet

To configure the eWON, all you need is a Web Browser and to open the internal Web page of the eWON. (<http://10.0.0.53> is the default IP factory setting)

If you are connecting to an eWON for the first time, you should read the "Quick Start Guide for eWON" shipped with your eWON. This document explains step by step how to change the IP address of the eWON LAN port in order to be able to connect to it.

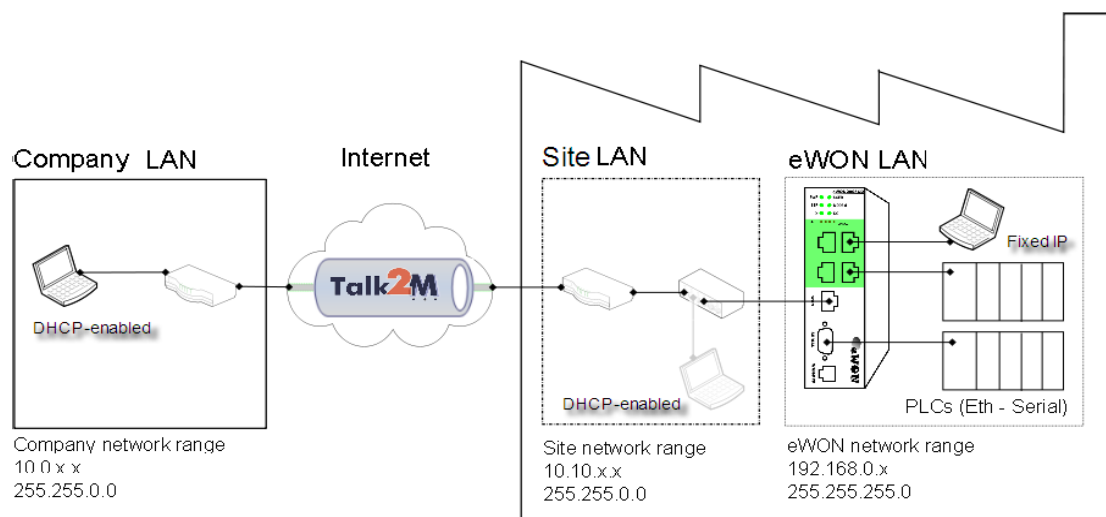
### 3. Typical configuration setup

Configuring remote access is simple. However, you will need to pay attention to the different IP ranges involved. The diagram below summarizes the different network ranges involved (numbers are examples).

When it is hooked on the Company LAN (or to the Site LAN) the configuration PC needs to be configured in DHCP-enabled mode for you to be able to go through the steps involving the general Ethernet/Internet infrastructure.

When it is hooked to the LAN-port of the eWON and the configuration PC needs to be configured with a fixed IP address - in the eWON LAN range - for you to be able to go through the steps involving the eWON (and the Ethernet connected PLCs).

**Note 1:** Because iterations between IP ranges are necessary during the configuration process, you could consider using 2 different configuration PCs. It is no problem if you use only one single PC, the present guide mentions each change in IP configuration that will be required.



**Note 2:** As the picture above shows, under normal circumstances the PC you will use to remotely access your eWON and PLCs will be on a different network than the site network. However, during configuration and testing, connecting PC to the site LAN is fine. As long as the site LAN address range is different than the eWON LAN address range you will not have routing issues.

## 4. Prerequisite: Determining suitable IP addresses

To avoid routing problems later, it is better to start to configure the eWON and the PLC with LAN IP addresses that will be suitable.

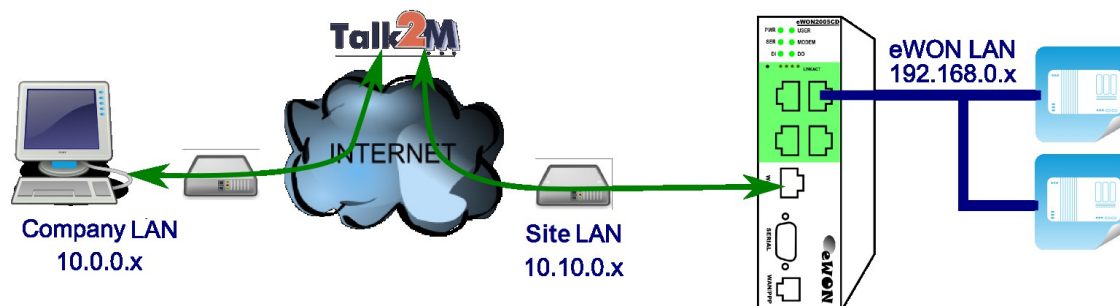
The type of physical carrier (GPRS or WAN/LAN) your eWON will use to connect to the Internet will have an impact on your IP address selection.

Before starting the actual configuration, please read the general principles below.

### 4.1 Internet connection using the WAN Interface

If you plan to connect to the Internet using the WAN interface, the eWON will require a LAN IP address at the PLC side and a WAN IP address at the network side.

Example of IP ranges involved in a WAN/LAN configuration:



**Important Note:** The company network address ranges (Company LAN and Site LAN in the example above) are specified and managed by the respective network administrators. These ranges simply cannot be changed. So before configuring your eWON LAN IP address and your PLC IP addresses, please ask for:

1. The specified company LAN network range to be used by the PC that will initiate the remote connection (Company LAN).  
In our example this range is 10.0.0.#
2. The specified company LAN network (Site LAN) range (and gateway) which the eWON WAN port will use to get Internet connection.  
In our example this range is 10.10.0.#

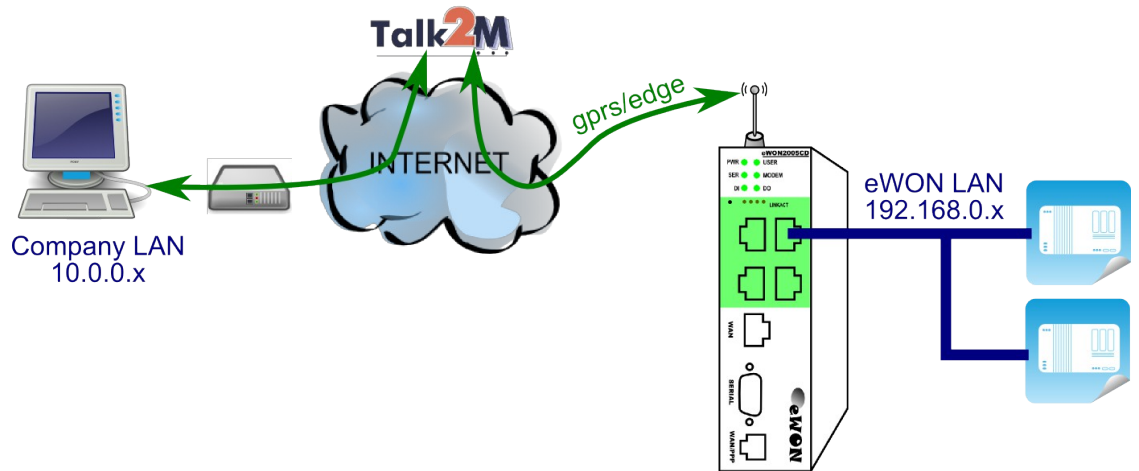
Knowing the ranges in use at the Company and Site side, you will be able to select a range **outside** these networks for the eWON LAN-port and the PLC.

In the above example, we could select addresses in the 192.168.0.# IP range for the eWON LAN and PLC since it does not overlap neither with the Company LAN range nor with the Site LAN range.

## 4.2 Internet connection by modem (GSM, PSTN, ADSL)

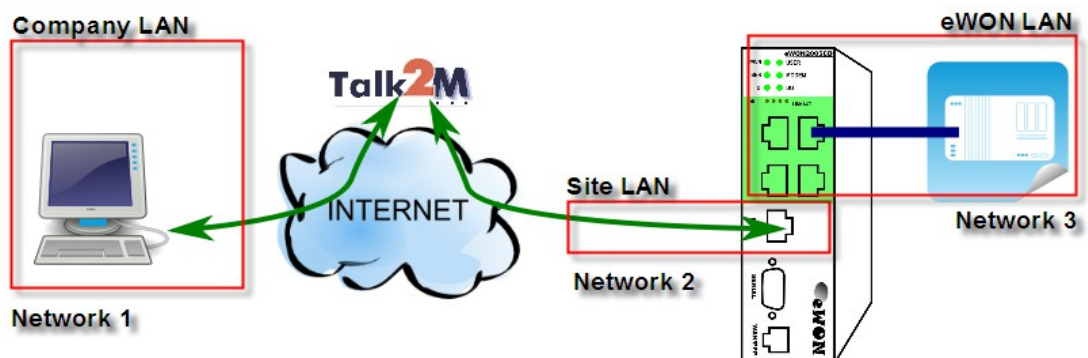
If you plan to connect to the Internet through a modem, you only need to select an IP address for the eWON LAN side. The IP address of the eWON LAN interface must be compatible with the IP address of the PLC, but be outside the network address space to which your PC is connected (Company LAN). If there is an overlap between the IP range of your PC and the IP-range of the eWON and the PLC LAN, the setup will not route correctly.

Example of IP ranges involved in a GPRS/Edge modem configuration:



## 4.3 For proper routing, remember...

1. The eWON LAN IP address must be part of the same IP range as the PLC LAN.
2. The eWON WAN and LAN IP addresses must be in different IP ranges. The WAN port of the eWON is generally DHCP-enabled, which is a good way to make sure that it will be compatible with the company network.
3. The remote PLC network (eWON LAN) must be in a different IP range than the company network on which your PC is connected (Company LAN).



Network 3 = eWON LAN = PLC LAN (all in same range).  
Network 3 ≠ Network 2  
Network 3 ≠ Network 1

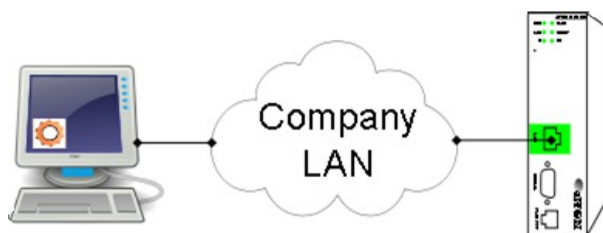
## 5. Reaching your eWON through the Internet

### 5.1 Step 1: Setting IP address of eWON LAN

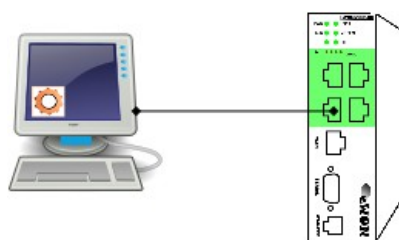
Once you have selected your IP addresses, you can start configuring your eWON. In our example, we will change the default factory address 10.0.0.53 to 192.168.0.53.

To configure your eWON LAN IP:

1. This connection will usually be made through the Company network. It can also be made with a point-to-point link. At this stage there is no constraint on the IP range of your PC. For this step, eBuddy can access the eWON even if your PC and the eWON have different network address ranges. eBuddy – eWON *detection and firmware maintenance utility*  
<http://support.ewon.biz/software.htm>



Connection through company LAN



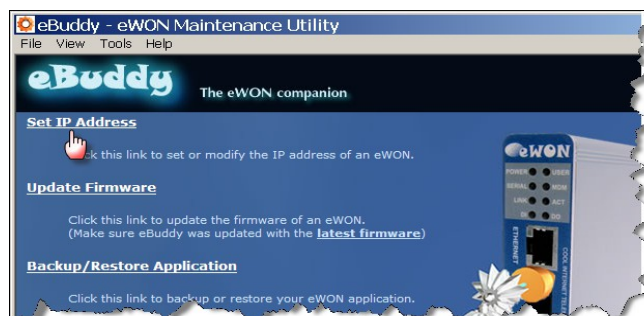
Point-to-point connection  
(if eWON model has only 1 LAN port use ***crossed*** cable).

2. Start the **eBuddy** utility on your PC

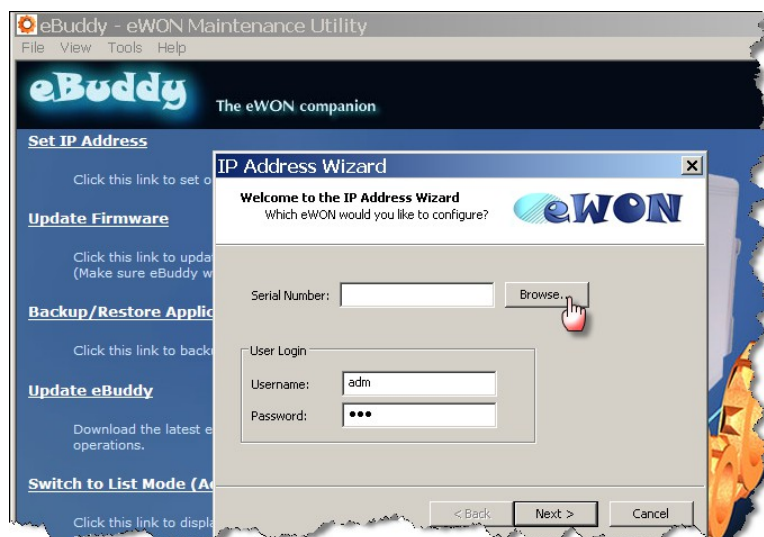


## 5. Reaching your eWON through the Internet

3. In the home page, select **Set IP Address**

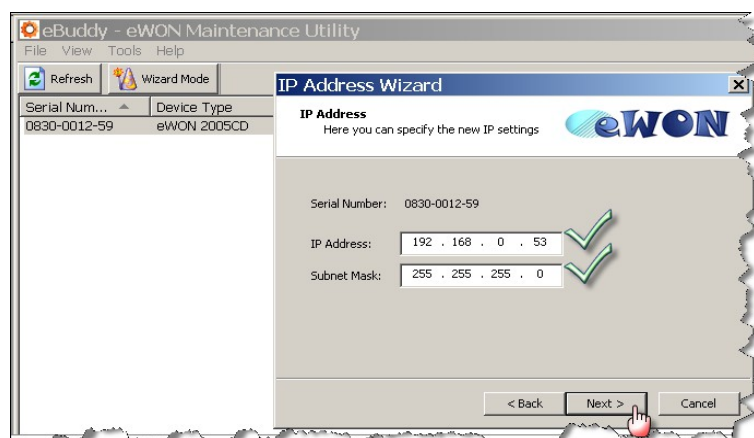


4. You don't need to fill out the Serial Number, just click on **Browse**



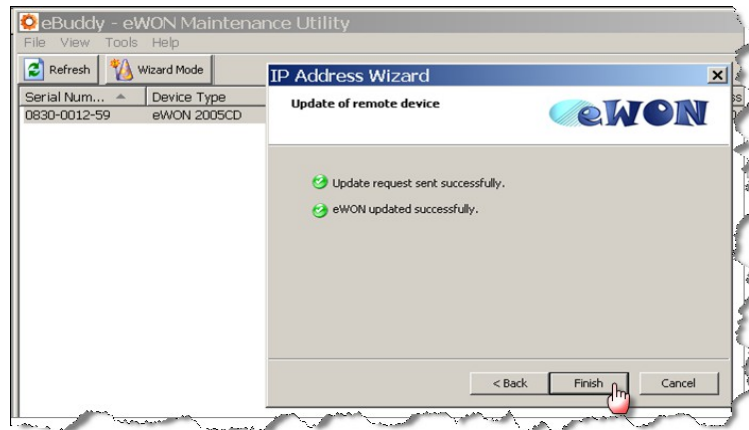
eBuddy finds your eWON. Select it by double-clicking on it and the IP Address window opens.

5. Enter new LAN IP address and Subnet Mask. Click **Next**

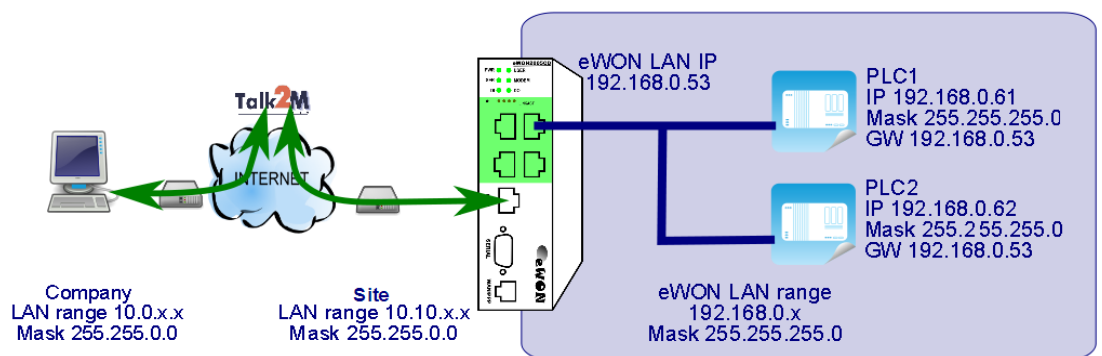


## 5. Reaching your eWON through the Internet

6. Wait until address update and device reboot are completed. Click **Finish**.




In our example the eWON was set to LAN IP address 192.168.0.53. As shown below, this address fits into the PLC-range and does not interfere with the Company LANs.

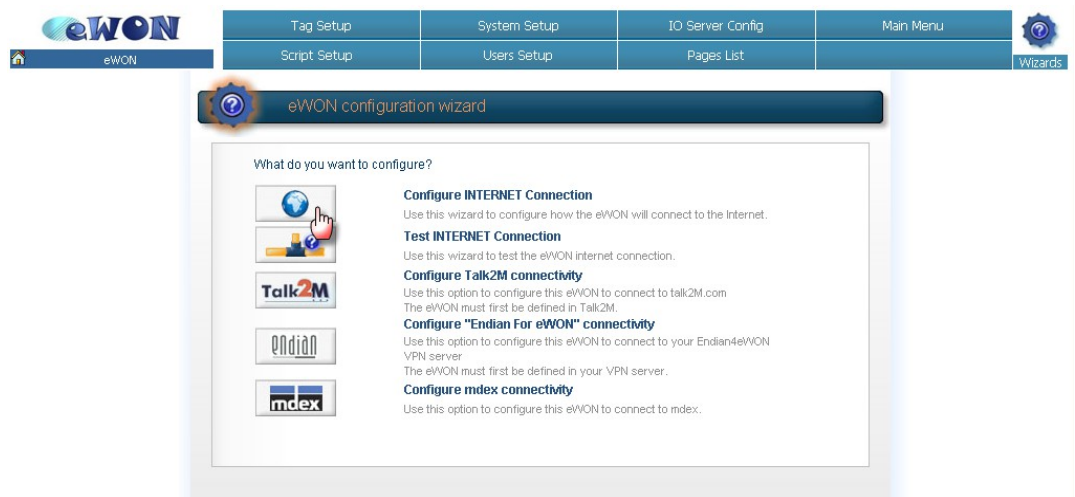


7. End of step 1

## 5.2 Step 2: Configure eWON for Internet connection

To configure your eWON Internet connection :

1. Configure the network parameters of your configuration PC to encompass the IP range of the eWON LAN. To do this, go to START, Settings, Network Connections. Open the currently used connection, select the TCP/IP parameter row and select a fixed IP address within the range of the eWON LAN. Click OK to close the wizard.
2. Connect the PC to one of the LAN ports of the eWON.
3. Open your Internet browser and access the eWON internal Web page by typing the LAN address you just configured (in our example http://192.168.0.53)
4. To open the eWON wizard page, click on **Configuration** in the toolbar and then on the wizard  icon. The following page will be displayed:



5. Click on the icon next to **Configure INTERNET Connection** to launch the wizard. Following window will be displayed (options in drop down are depending on hardware configuration) :



## 5. Reaching your eWON through the Internet

---

6. According to your eWON type (with a modem or a second Ethernet interface), you will have the possibility to choose between different connections:

- *Modem Connection*
- *Ethernet WAN\* connection*
- *ADSL*

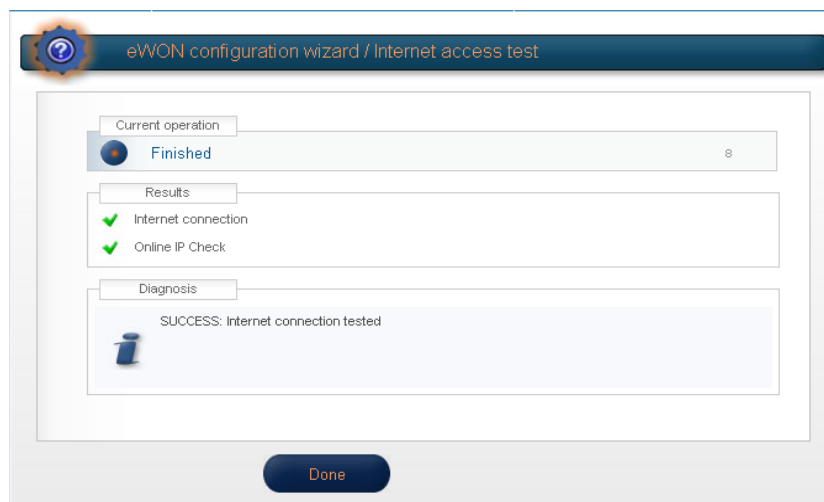
\*WAN refers to **wide area network**, which is network that covers a broad external area using the Internet infrastructure, as opposed to LAN referring to local area network that is restricted to internal networks.

From the next step onwards, we will address the most current access which is **Ethernet WAN connection** (for modem connection refer to appendix 1).

7. Make sure the WAN port of the eWON is physically connected with the company network. **Traffic LEDs are normally not yet lit as the connection is not yet defined.**
8. Select **Ethernet WAN connection**. The usual configuration for Ethernet is DHCP enabled (device obtains IP address and Internet access automatically from host). Use a fixed IP address, Gateway and DNS only if this is clearly required by the network admin.

The screenshot shows the 'eWON configuration wizard / Internet Connection' window. The 'Ethernet WAN connection' section is active. Under 'Address Setup', the 'DHCP' option is selected in a dropdown menu, which is highlighted with a red box. Below this, there are input fields for IP Address (10.0.5.170), Subnet Mask (255.255.0.0), and Default Gateway (10.0.0.254). The 'DNS' section has the 'Via DHCP' checkbox checked. Below that are fields for Primary DNS (10.0.0.13) and Secondary DNS (0.0.0.0). The 'HTTP Proxy' section has an unchecked checkbox for 'Connect to Talk2M through Proxy'. A red vertical line is drawn to the right of the IP and Subnet Mask fields, with a callout box containing the text 'Not for reference allocated automatically'. At the bottom of the window are '<< Previous' and 'Next >>' buttons.

9. Click **Next** and go to step 10 **Internet Connection Test**.
10. The last step of the Internet configuration consist in a communication test. This test should end up successfully as shown in the snapshot below:



**The Internet Connection** means that the eWON is correctly configured for an Internet connection. If this test is not successful, then go back to the previous configuration steps and recheck all settings for compatibility and accuracy.

The **Online IP Check** means that the eWON was actually able to reach an IP address on Internet. **It might not be so critical if this particular test fails**. Go ahead with the procedure without being too much concerned.

You normally do not need to read this manual to complete the present procedure, but we mention for reference the detailed document describing the use of the wizard: AUG-019-0-EN-(eWON Configuration for Internet Access Using the Wizard). [http://support.ewon.biz/docs/Talk2M\\_Free.htm](http://support.ewon.biz/docs/Talk2M_Free.htm)

11. End of step 2.

### 5.3 Step 3: Creating the eWON in your Talk2M account

To connect to your eWON remotely, we will use eCatcher and Talk2M.

1. You can skip the present point if you already created a Talk2M account. If you haven't created your Talk2M account yet, install eCatcher and create your Talk2M account as per § 3 of the guide "Talk2M – Getting started on Service Free+" available at [http://support.ewon.biz/docs/Talk2M\\_Free.htm](http://support.ewon.biz/docs/Talk2M_Free.htm). You can download eCatcher from this link as well.
2. Connect your configuration PC to the company LAN and configure its network parameters to DHCP enabled (acquiring an IP address automatically).
3. On the menu on the left side of the eCatcher interface click on the "+" (New eWON) icon in the eWON list section. The following window appears:

The screenshot shows a window titled "New eWON" with the Talk2M logo. The window contains the following fields and options:

- eWON Name :** eWON for Schneider
- eWON Description :** Device for technical writing
- eWON Serial Number :** (empty field) You may leave this field empty. The eWON will send its S/N to Talk2M later.
- Connection Type :** LAN/ADSL (dropdown menu)

Buttons: Cancel, Next

4. Enter the **eWON name** you want to use on the Talk2M server to identify the remote connection to your eWON.
5. The **eWON Serial Number** can be left empty. It will be encoded automatically during the Talk2M connection configuration of the eWON.
6. Select the **Connection Type** to specify how your eWON will be connected to the Talk2M server using:
  - ◆ a **LAN/ADSL** connection
  - ◆ a **GPRS/EDGE** connection or
  - ◆ an Internet connection over a **PSTN** connection (analog modem).

If you specify a GPRS/Edge connection, then you will be asked to specify the phone number. This will allow Talk2M to **wake up your eWON remotely** using a Wake-Up SMS as described in Appendix 1.

## 5. Reaching your eWON through the Internet

Click on **Next**.

In older versions, you were asked to specify the **Remote Network** to reach behind the eWON like shown below. Since firmware version 6.2s0, when launching the eWON Talk2M wizard to enter the Talk2M-key, the wizard transfers the eWON LAN IP address to Talk2M automatically. This makes that step is skipped.

New eWON

**Talk2M** Note: this step is skipped in newer Talk2M versions... Now machines can talk

**Remote Network** Remote subnet accessible on the eWON LAN side (if any).

eWON LAN IP :  e.g.: 10.0.0.53  
Leave blank if you need not access the eWON's LAN.

Network Mask :  e.g.: 255.255.255.0

... in this case, the Remote Network configuration is acquired automatically.

Previous Next

7. Click on **Next**.

New eWON

**Talk2M** Note: this step is skipped in newer Talk2M versions... Now machines can talk

Custom Field 1

Custom Field 2

Custom Field 3

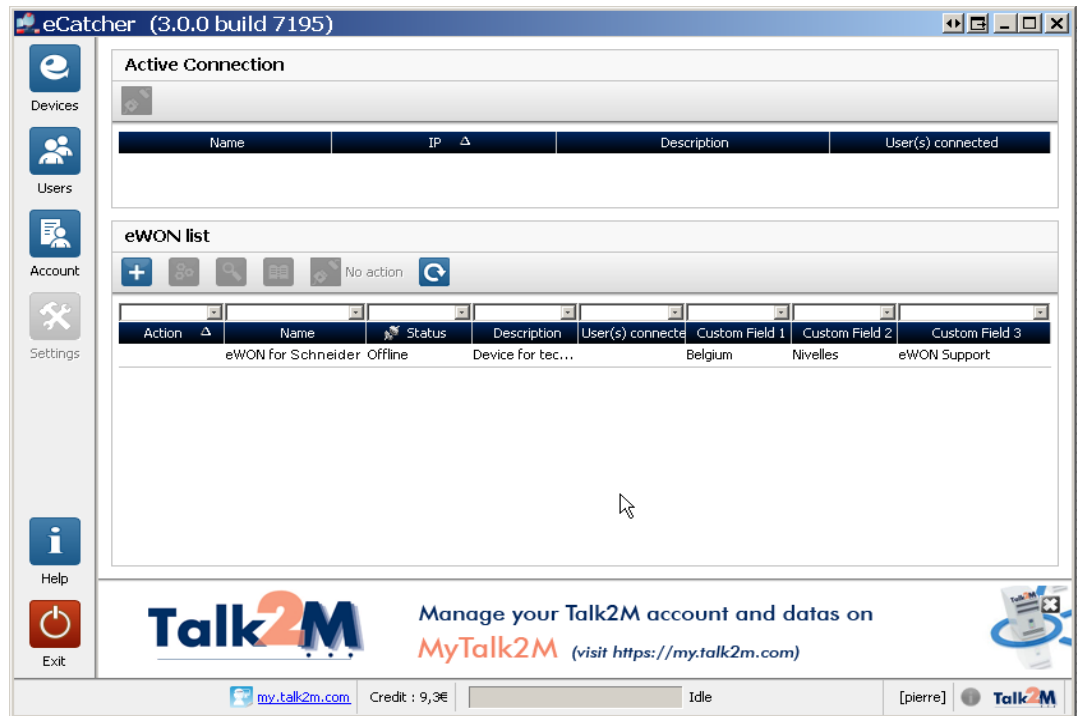
Previous Finish

Here you can enter additional information concerning your remote connection. The **Custom Fields** can be used to classify or filter your different remote connections. This will allow you to find easily the eWON you need to connect to.

## 5. Reaching your eWON through the Internet

8. Click on **Finish** to add the eWON to the eWON list of your Talk2M account.

The new eWON account will now be displayed in the eWON List section on the lower part of the window.



9. End of step 3.



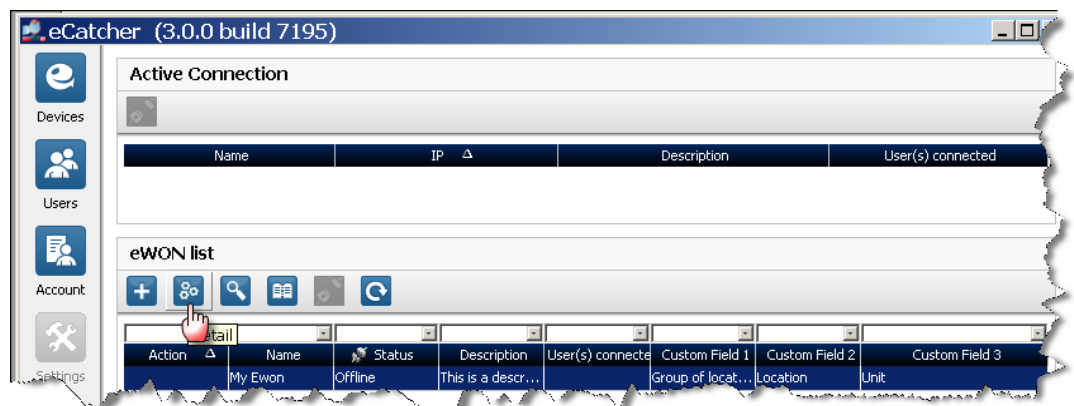
## 5.4 Step 4: Getting the Talk2M activation key for the eWON

Up to now we only added the eWON on our Talk2M account, but we did not yet configure the eWON to connect to the Talk2M server.

To enable the eWON connecting to the Talk2M server, an activation key is needed. This key will allow the eWON to get back the VPN keys and certificates needed for the VPN connection. This step still uses the DHCP-enabled configuration of the previous step.

To get the activation key, proceed as follows:

1. Select the eWON in the eWON list and click on the **Detail** button.

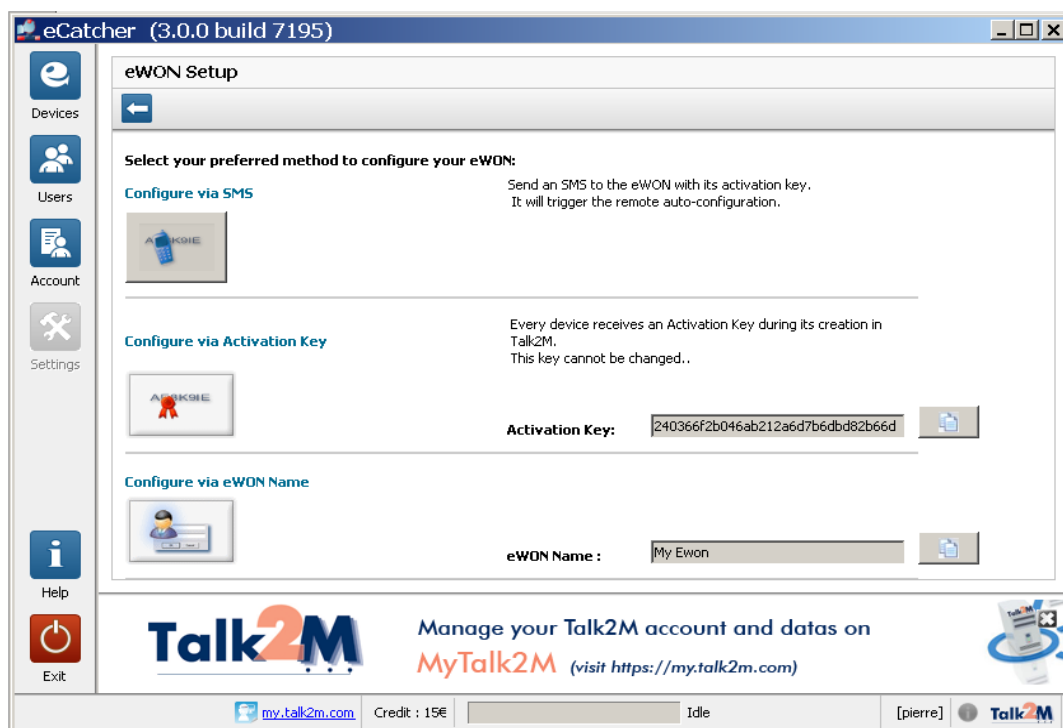


The eWON Detail window opens.

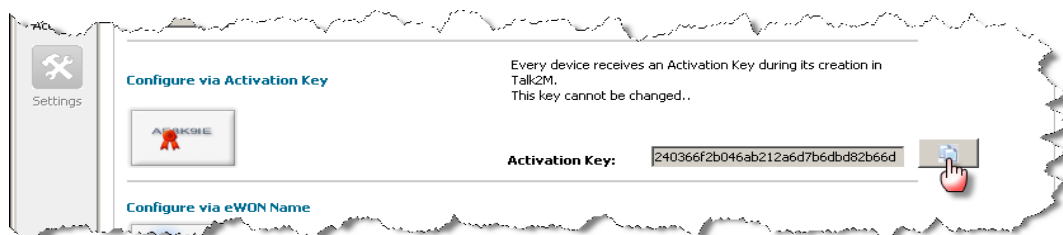
2. Click on the **eWON Setup** button.



The following window opens:



3. Under the **Configure via Activation Key** section you will find the Activation Key needed for the eWON configuration. Click on the **Copy** icon to copy the activation key into the clipboard of your PC. Keep this information on your clipboard to complete Step 5 (go to this step).




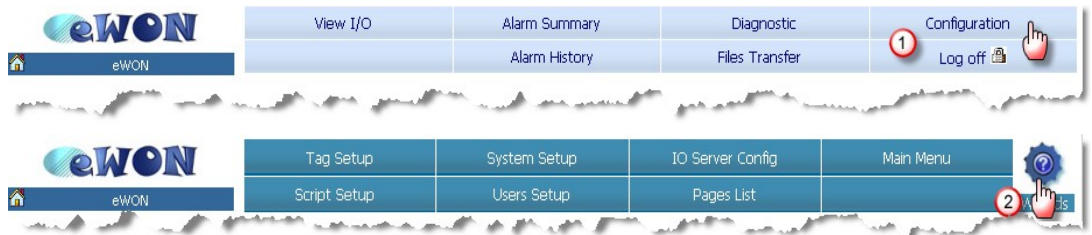
Note: Using the Activation Key is the standard procedure. Next to this method, there are 2 alternative methods:

- ◆ **Configure via eWON Name:** During the eWON Talk2M wizard, instead of using the Activation Key you can alternatively specify the **eWON Name** and use the user name and password of your Free+ account.
- ◆ **Configure via SMS:** If your eWON has a GSM modem and if the eWON is already configured for Internet connection, then you can also send an SMS to the eWON containing the activation key. When eWON receives the SMS, it will then trigger automatically the Talk2M connection wizard and will configure itself to connect to the Talk2M server.

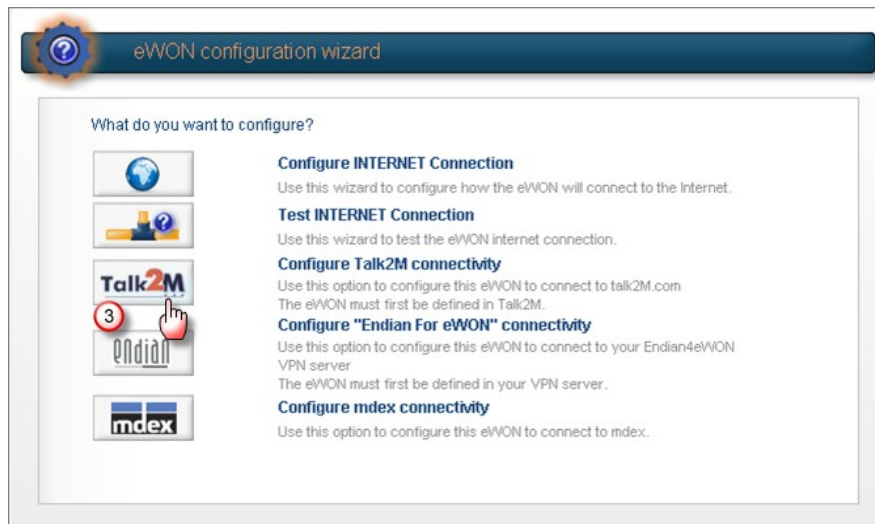
4. End of step 4.

## 5.5 Step 5: Configuring your eWON to connect to Talk2M

1. Configure the network parameters of your configuration PC to encompass the IP range you used to allocate the LAN IP address to the eWON.
2. Connect the PC to one of the LAN ports of the eWON.
3. Open your Internet browser and access it's internal Web page by typing the LAN address you just configured (in our example http://192.168.0.53)
4. To open the eWON wizard page, click on **Configuration** in the toolbar and then on the **Wizard**  icon.

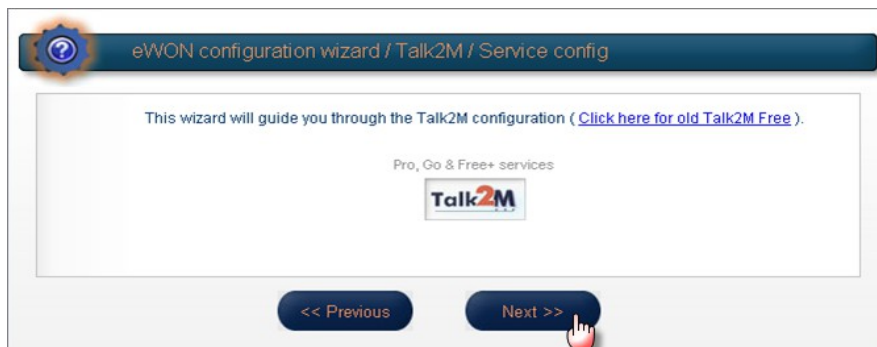


The wizard window will open:



5. Click on the **Talk2M** wizard.

The following window will be displayed:



## 5. Reaching your eWON through the Internet

6. Click on **Next** to register the eWON on the Talk2M server.
7. Click on **Register with ACTIVATION KEY**, as in the previous step, we copied the Activation Key to the clipboard of your PC. Paste the Activation Key (Ctrl+V).

eWON configuration wizard / Talk2M

Select your preferred method for registering the eWON on [Talk2M.com](http://Talk2M.com)?

**Register with eWON NAME**  
Use the eWON Talk2m name and your Talk2m login and password.  
The eWON must first be defined in Talk2M.

**Register with ACTIVATION KEY**  
Use the eWON 'Activation Key' provided by talk2M.com.  
The eWON must first be defined in Talk2M.

Activation Key:

**Important:** [Your eWON must have a working Internet Connection](#)  
Before using the wizard, the eWON Internet access must be correctly configured.

<< Previous      Next >>

8. Click **Next**

**Note:** If you choose the **Registration with eWON NAME** method, then you will be asked to enter the Name you specified for the remote connection in your Talk2M account. You will also need to specify your Talk2M account name and enter the user name and the password which you use to connect to your Talk2M account.

The next window of the wizard will ask you if you need to connect through a Proxy server.

eWON configuration wizard / Talk2M / Proxy config

**Connect via HTTP proxy**

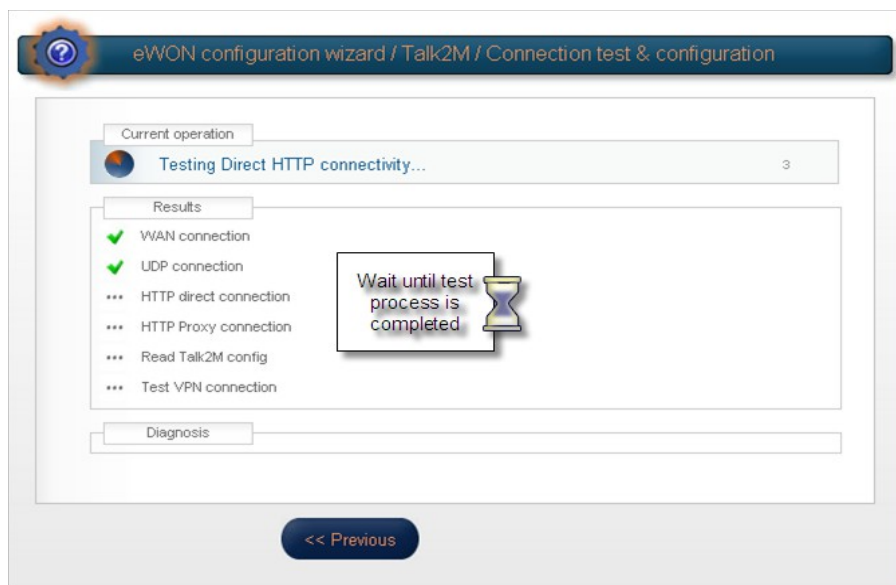
Enable this option only if you are connected to Internet via proxy (ask your network administrator if not sure)

<< Previous      Next >>

9. Check this option only if you need to specify a Proxy server for the Internet connection. Otherwise leave this option unchecked and click **Next**.

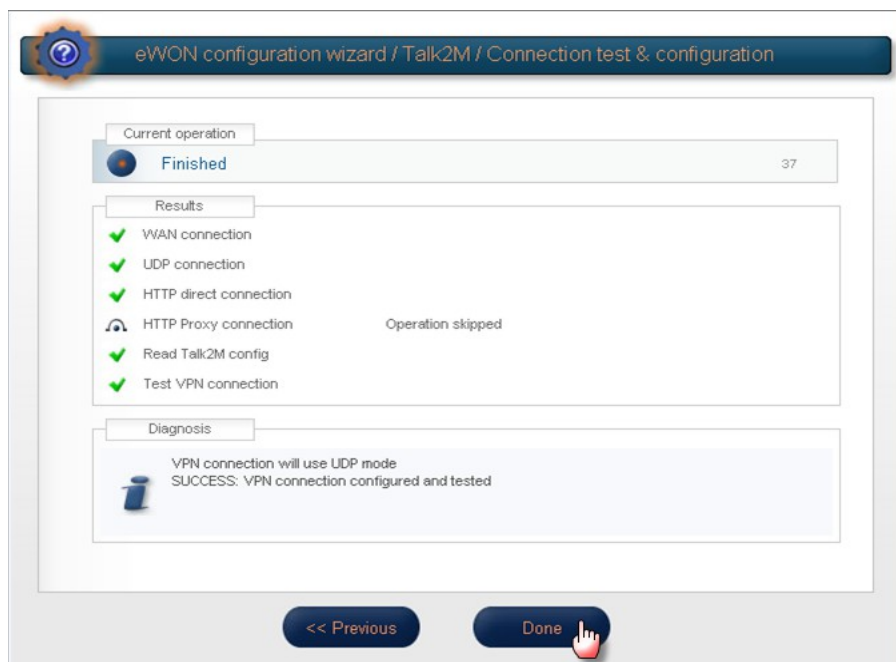
## 5. Reaching your eWON through the Internet

10. The Talk2M registration will now start and the result will be displayed on the wizard page:



The eWON will first test the different connections needed to connect to the Talk2M server (UDP and HTTP or HTTP using a Proxy). Then the eWON will connect to the Talk2M server and retrieve the VPN keys. At the end, the eWON will establish the VPN connection to the Talk2M server.

Once the registration and configuration of the eWON are completed, the result will be displayed on the Wizard page as shown in the following picture:

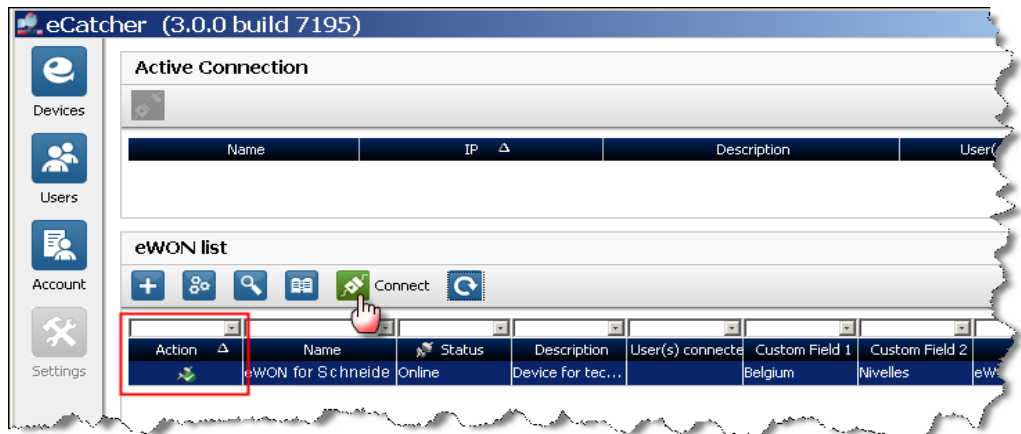


11. Click on the **Done** button to close the wizard.  
Your eWON is now configured to connect to the Talk2M server.
12. End of step 5.

## 5.6 Step 6: Connecting the eWON remotely

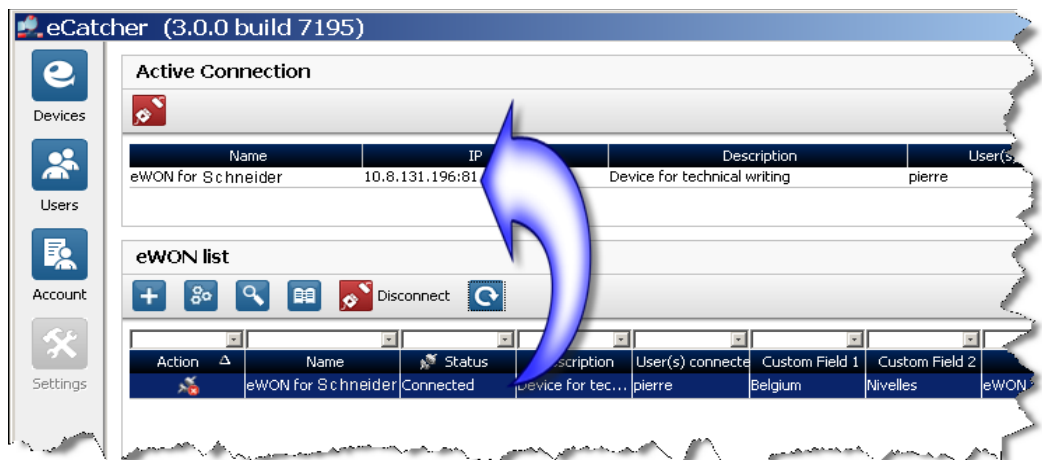
Now that the eWON is configured to connect to Talk2M, we can establish the remote connection to the eWON.

1. Connect your configuration PC to the company LAN and configure its network parameters to DHCP enabled (acquiring an IP address automatically).
2. Launch eCatcher and open your Talk2M account.
3. In the eWON list section select the eWON you want to use for the remote connection.



The eWON which you just configured should now be displayed as on line (green tick in the action column). This means that the eWON has established its VPN connection to the Talk2M server.

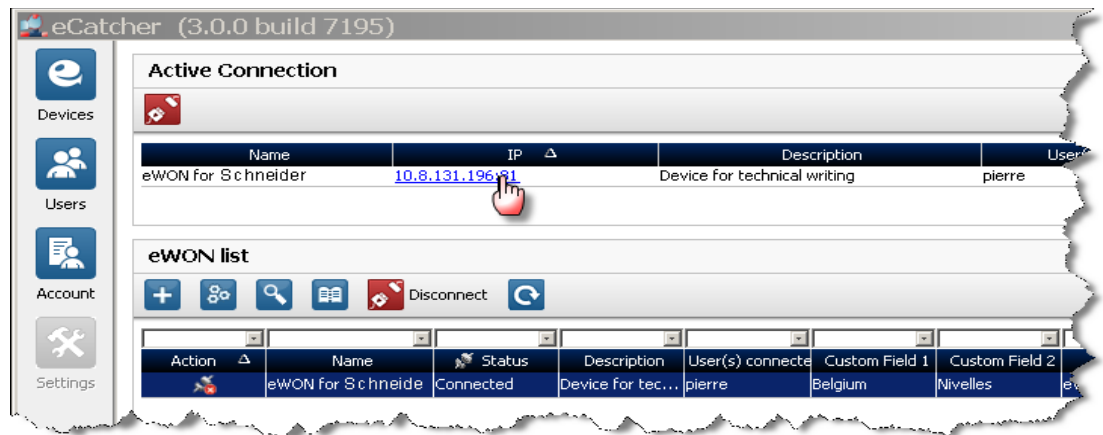
4. Double-click the **online icon** or click on the **Connect** button displayed in the eWON list menu to establish the remote connection to this eWON. eCatcher will now establish the VPN connection to the Talk2M server.
5. Once the VPN connection to the eWON is established, the eWON will be displayed in the "Active connection" section on the top of the window.



## 5. Reaching your eWON through the Internet

---

- The PC is now connected to the eWON using the VPN tunnel and you can start to use the remote connection.
- If you want/need to connect to the eWON itself, you can click on the IP address link in the **Active Connection** section, as displayed in the following picture. Once the home page of the eWON web interface is displayed, you know for sure that your connection is effective.

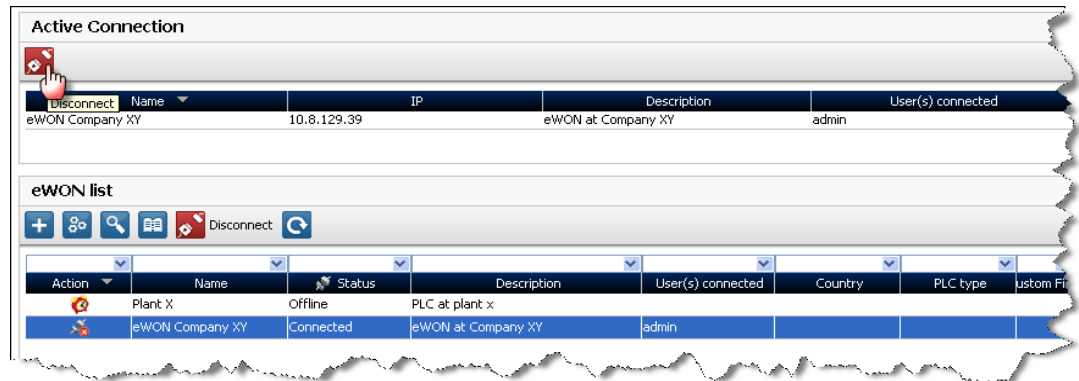


**Note:** For specifics related to modem connection (including GPRS/Edge) please go to [Appendix 1 – Specifics for Modem connections](#) at the end of this guide.

- End of step 6.

## 5.7 Step 7: Terminating the remote connection

1. Click on the disconnect button in the Active connection section. This will close the VPN connection with the eWON.



2. **Note:** For specifics related to modem connection (including GPRS/Edge) please go to [Appendix 1 – Specifics for Modem connections](#) at the end of this guide.
3. End of step 7.

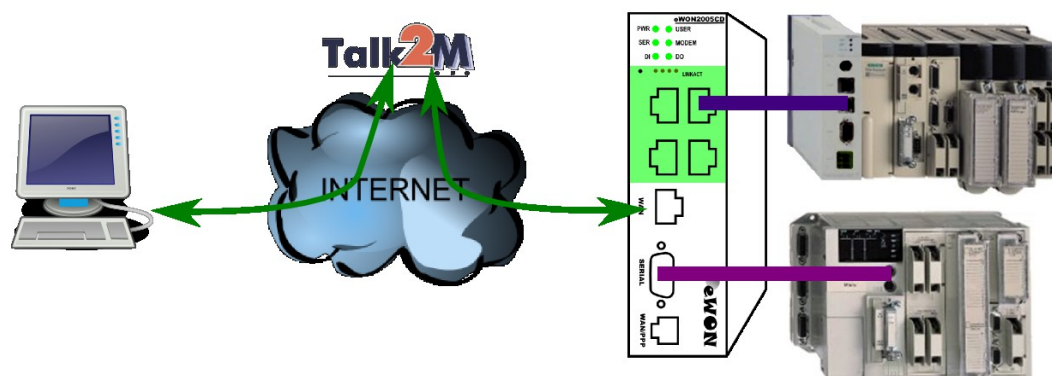


## 6. Linking eWON and PLC

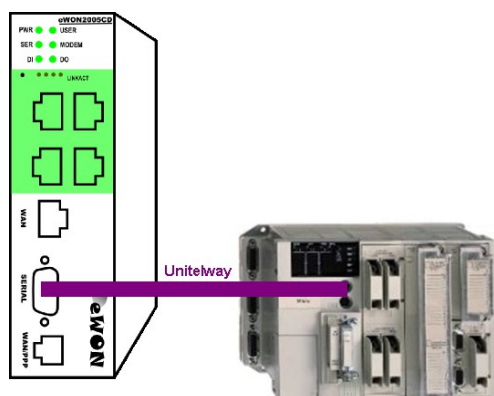
### 6.1 Local link capabilities

Depending on whether the PLC will be connected to the eWON with a Unitelway or **Ethernet** link, the eWON configuration and the connection to the PLC will be different. Both types of connections will be explained.

Keep in mind that you can combine both connection types without any problem. For example, you can connect at the same time to one or more Modicon TSX Micro & Premium using the Unitelway port of the eWON and connect to one or more Modicon TSX Micro & Premium PLC(s) using the Ethernet connection between the eWON and the PLC.

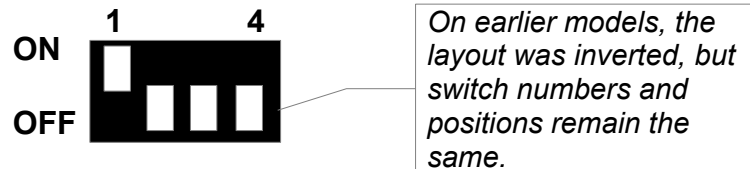


### 6.2 Serial link (Unitelway) configuration

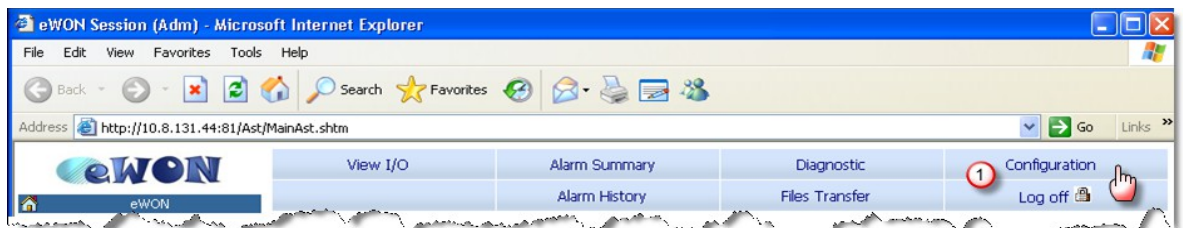


## 6. Linking eWON and PLC

1. Set the serial port dip switch of the eWON to RS485 mode (1 ON and all others OFF) to allow the Unitelway communication with the PLC. The settings of the switches are indicated on the eWON sticker on the left hand side of its housing.

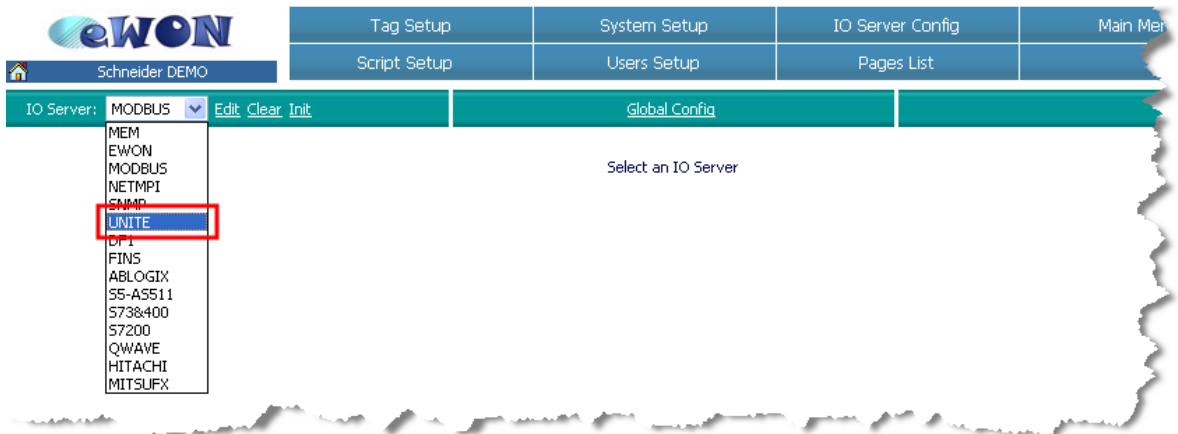


2. Go to the eWON Web page either using the just configured VPN tunnel or a point-to-point connection to the eWON LAN port.



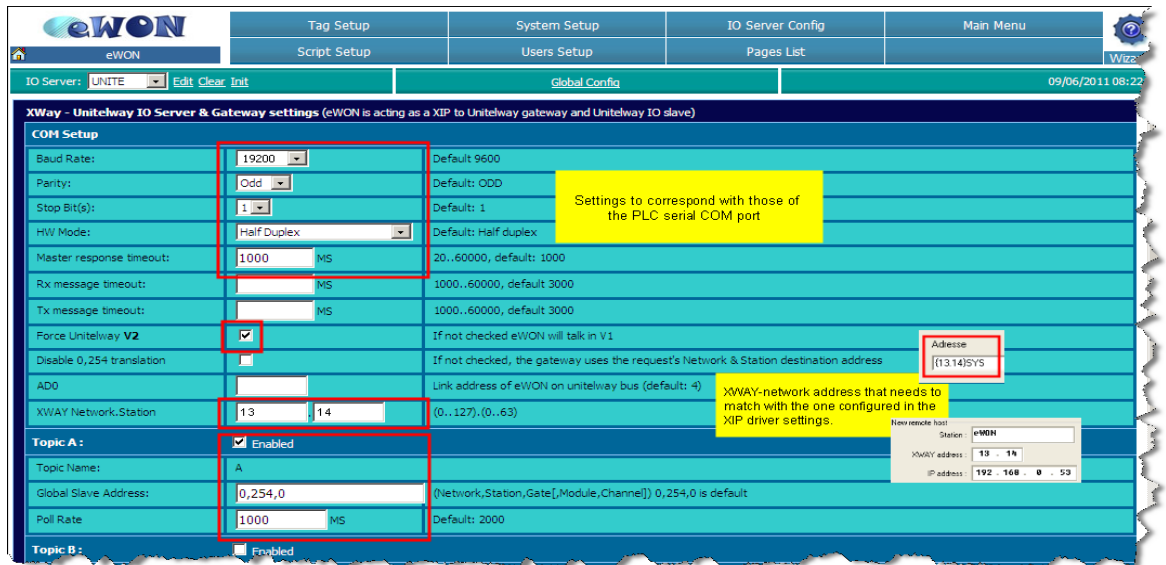
4. Open the eWON IO Server configuration and go to the IO Server page

5. In the drop down field select the "Unitelway" IO Server



6. Set the **Baud Rate, Parity, Stop Bits, HW Mode, Master Response Timeout** corresponding to those actually configured in the PLC you want to communicate with (shown values are eWON's default values). It is recommended to have the option **Force Unitelway V2** checked (uncheck only if you are using older PLC-Series AND facing communication problems).

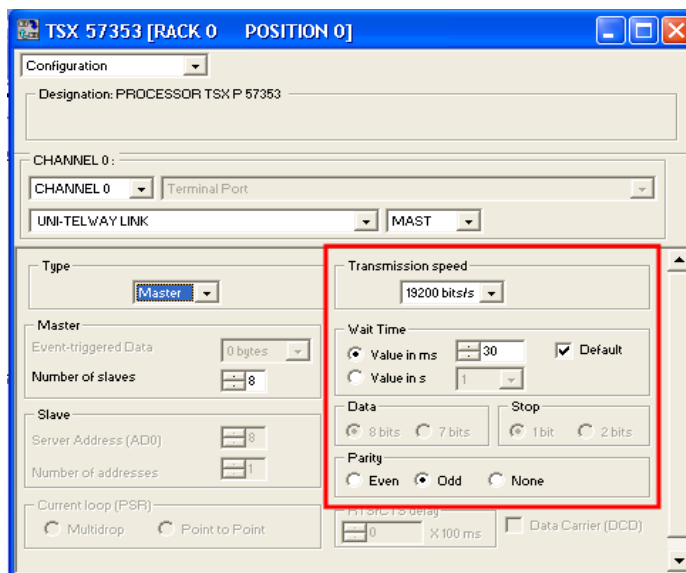
## 6. Linking eWON and PLC



In most cases, you can leave the **ADD** field empty (= default value which is 4).

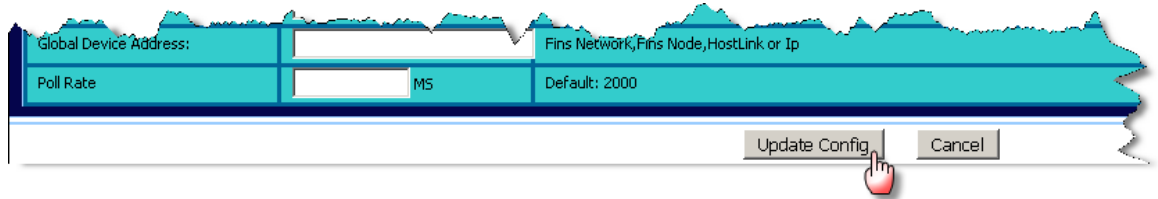
In **XWAY Network.Station** you have to introduce the XWAY address of the eWON (which is a set of two numbers). This address will have to match with those configured in the XIP Driver (as shown in the pictures inserted in the snapshot above, see § 7.2. [XIP Driver Configuration for serial connection](#)).

**Note:** For the Unitelway link communication parameters, the corresponding fields in the PL7 PRO interface are part of the hardware configuration, like shown below:



## 6. Linking eWON and PLC

7. Save your settings by clicking on **Update Config** and leave the Web configuration interface open.



8. Interconnect the Unitelway port of the eWON with your PLC using the TSX CX 100 cable (mini-DIN connector in TER at the PLC side – cable pinout see [13. Appendix 4 – Unitelway cable](#)).
9. End of serial link configuration.

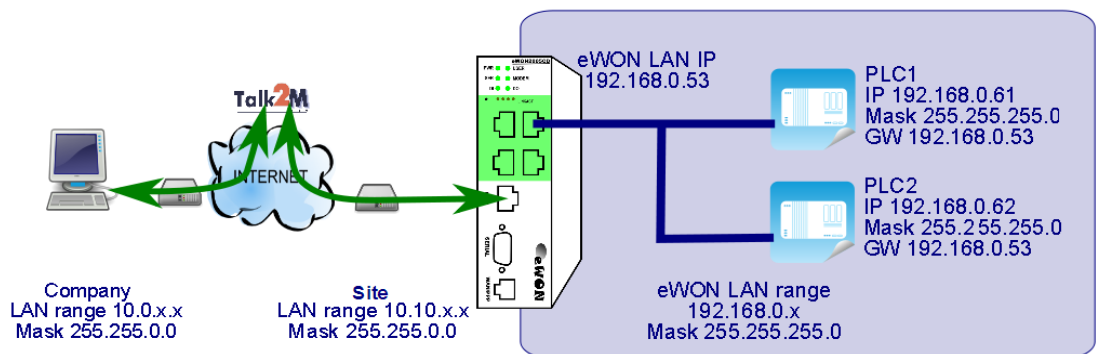
### 6.3 Ethernet link configuration

#### - Tips -

As of firmware v12, there is a PLC Discovery feature inside the eWON. This allows the automatic discovery of PLC (linked to the eWON) on the network while you are connected through Talk2M. No need to set the IP of the PLC in the same range than the IP of the eWON.

For more information, please refer to [AUG-070: PLC Discovery through Talk2M](#)

If firmware version is lower than 12, please follow the procedure hereunder.



1. Connect your configuration PC (set with a fixed IP in the IP range of Ethernet card module of the PLC). Schneider Ethernet modules feature a web server allowing to make the IP configuration.

## 6. Linking eWON and PLC

- Open your web browser and type the PLC IP in the URL field.
- Click on the **Online Configuration** link . The access to this page is protected by login and password. If they have not been changed, the default values are :

Log in: USER  
Password: USER



- Configure an IP address that is in the same range as the eWON (in our example 192.168.0.61). The XWAY address is the one of the PLC as well (in our example 13.11).

### IP Configuration

<b>Ethernet Interface IP Address</b>				
<input checked="" type="radio"/> Configured <input type="radio"/> Automatic configuration				
IP address :	192	168	0	61
Subnetwork mask :	255	255	255	0
Gateway address :	0	0	0	0
<b>XWAY Address</b>				
Network :	13	Station :	11	
<b>Network Connection</b>				
<input checked="" type="radio"/> Ethernet <input type="radio"/> Modem				

#### Configuration of Connections

Connections :      Access Control

Xway Address :    IP Address :    Protocol :    Access

          UNITE   

New   Edit   Remove   Ok   Cancel

XWay	IP Address	Protocol	Access	Mode

- Click on Apply on the bottom of the page, the server asks for the configuration password. If it was not modified, the default password is: USER

### Enter Configuration Password

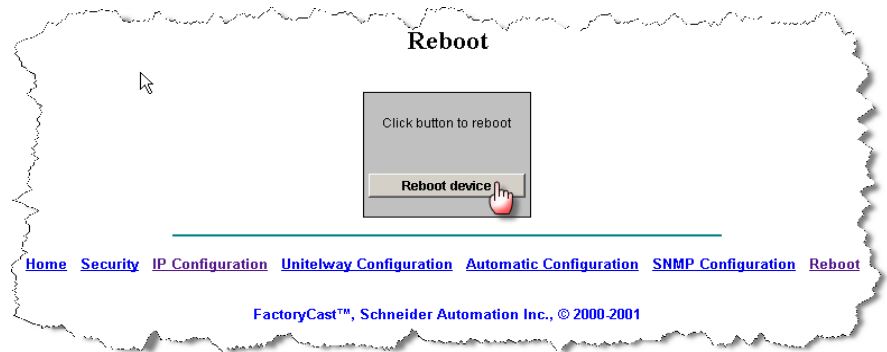
Please type your configuration password

Password   

OK    Cancel

## 6. Linking eWON and PLC

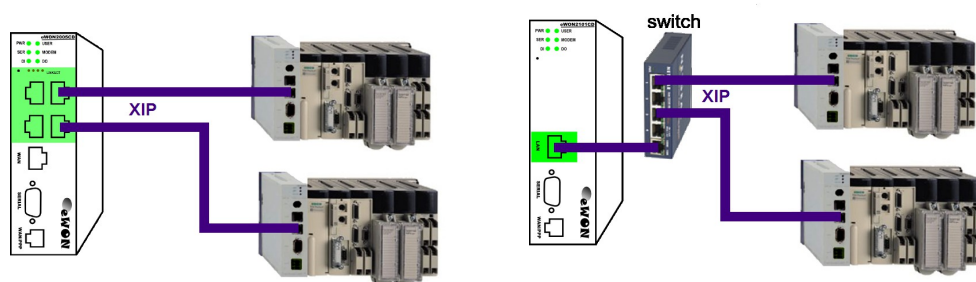
6. You need to reboot the Ethernet card after sending the new parameters. To do this, go back to the home page and click on the Reboot link (you are again asked your password).



7. 1. You can now make the physical link between the PLC to the Ethernet LAN port of the eWON.
8. From eWON firmware version 6.2s1 onwards, the **Plug'nRoute** function automatically configures the Ethernet routing. With this configuration, it is - in most cases - no longer necessary to set the eWON address as Gateway into the PLC.

If, for any reason, you are using an earlier firmware version (not recommended) OR would the Plug'nRoute function not work in your specific application, then you should refer to [Appendix 2 – eWON as Gateway in PLC](#).

Note 2: The eWON types with 4 LAN ports (2005CD or 4005CD) can be connected to the Ethernet port of the PLC directly. Whereas the eWON types with a single LAN port (2101CD or 4101CD) need to be connected with a crossed cable (single PLC) or an external switch (multiple PLC).



1. End of Ethernet link configuration.

## 7. PLC software mapping configuration

### 7.1 Understanding XIP

The next step in the configuration is to set up the PL7 software to use XIP.

XIP is one of the Ethernet protocols used by Schneider. The eWON provides XIP to Unitelway Gateway.

The routing flow can be described as follows:

both in serial and in Ethernet mode:

- the PL7 software is configured to address the PLC as if it is connected by Ethernet, even when it is connected in serial link, and sends a request through the XIP driver installed on the PC
- the PLC replies to the eWON request in the corresponding format (XIP or Unitelway depending on the local interface) which forwards the answer to the address of the XIP driver on the PC.

in serial link only:

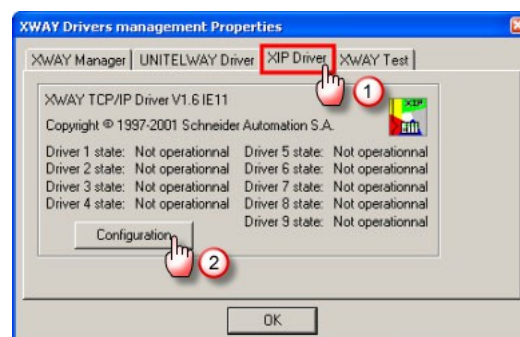
- the eWON picks the packet from this address and converts it in Unitelway before forwarding it
- from the PC-side (XIP driver), the eWON is seen as an XWAY master. From the PLC-side, the eWON is seen as an Unitelway client.

### 7.2 XIP Driver Configuration for serial connection

1. If it is still connected as described in § 5.6. [Step 6: Connecting the eWON remotely](#), temporarily disconnect the VPN link with the eWON. If you discard doing so, you might face routing issues with the Xway Drivers Manager.
2. Start **XWAY Drivers Manager**



3. Select the XIP Driver tab (1) from the Drivers Management Properties window and click on **Configuration** (2).



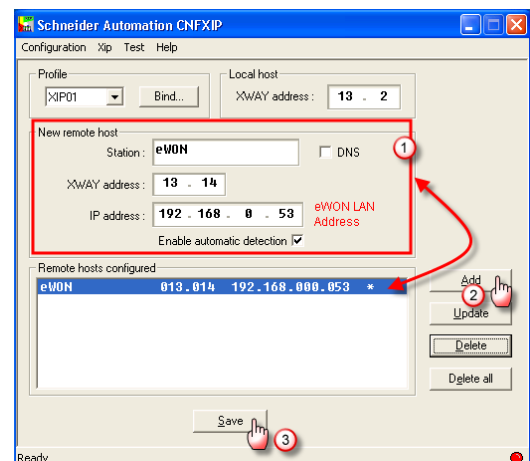


## 7. PLC software mapping configuration

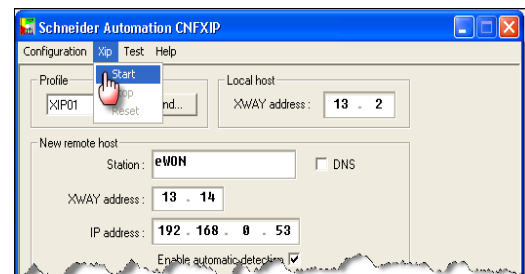
- In our example, the defined **Profile** is XP01 and the **Local Host** 13.2 is the **XWAY address** is the address the PC (XIP driver). This XWAY address is not that important, it just needs to be in the same range as the as the XWAY address of the eWON.

In **New remote host** set the **XWAY address** as defined in the IO Server of the eWON (see § 6.2 Serial link (Unitelway) configuration) and the eWON LAN **IP address** (1).

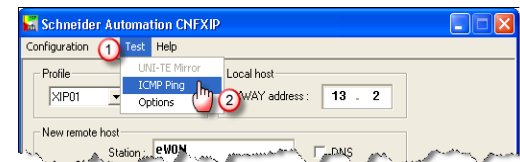
Click on **Add** (2) and then on **Save** (3).



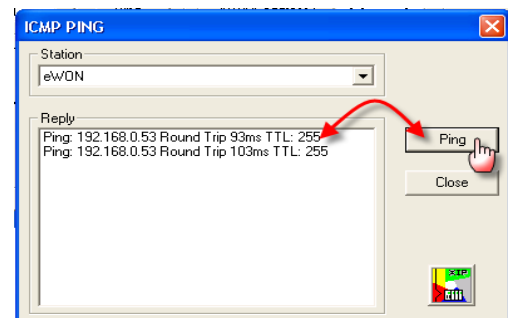
- Then click on **Start** from the **XIP** menu



- Select **ICMP Ping** in the **Test** menu:



- Then click on **Ping**, you should get the following screen confirming that the eWON is physically responding (if not, check § 9. Troubleshooting).





## 7. PLC software mapping configuration

- The XIP protocol connection is tested by sending a mirror request to the PLC. To do this, close the **ICMP Ping** window and the **CNFXIP** window to return to the **XWAY Drivers Management** window.

Select the **XWAY Test** Tab (1), select XIP01 in the driver name drop down box:

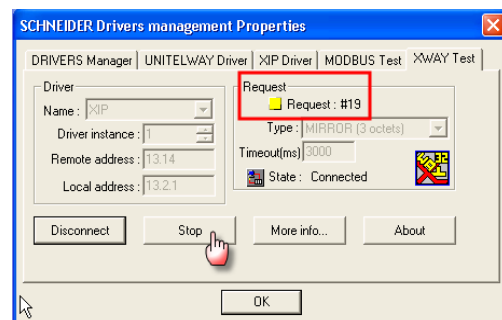
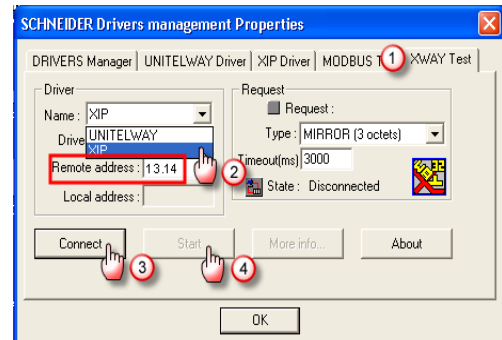
set the **Remote Address** to 13.14 (2) this is the eWON XWAY address - see § 6.2 [Serial link \(Unitelway\) configuration](#).

Click on **Connect** (3)

Click on **Start** (4)

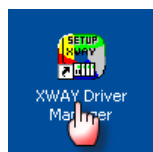
- You should see the Request counter increasing quickly  
Click on **Stop**.

- End of serial PLC software mapping configuration

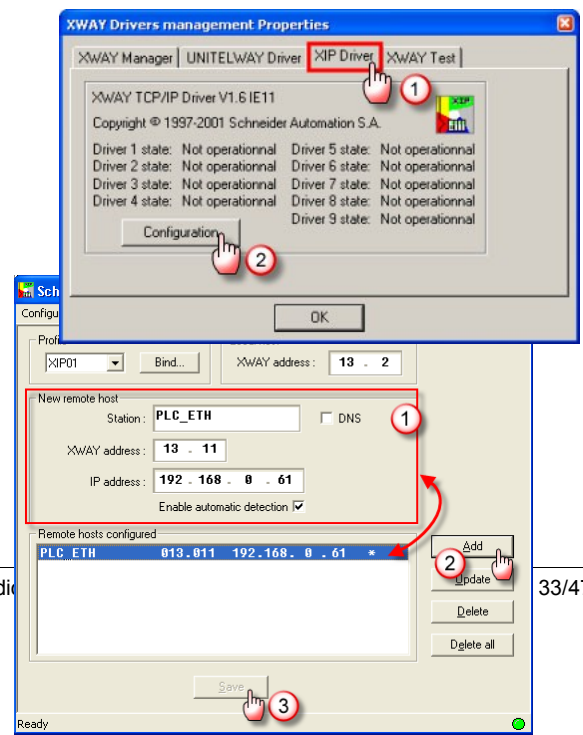


### 7.3 XIP Driver Configuration for Ethernet connection

- If it is still connected as described in § 5.6. [Step 6: Connecting the eWON remotely](#), temporarily disconnect the VPN link with the eWON. If you discard doing so, you might face routing issues with the Xway Drivers Manager.
- Start **XWAY Drivers Manager**



- Select the XIP Driver tab (1) from the Drivers Management Properties window and click on **Configuration** (2)



## 7. PLC software mapping configuration

---

4. In our example, the defined **Profile** is XP01 and the **Local Host** 13.2 is the **XWAY address** is the address the PC (XIP driver). This XWAY address is not that important, it just needs to be in the same range as the XWAY address of the eWON.
5. In **New remote host** set the **XWAY address** and the **IP address** (1) of the PLC (see § [6.3 Ethernet link configuration](#)) .

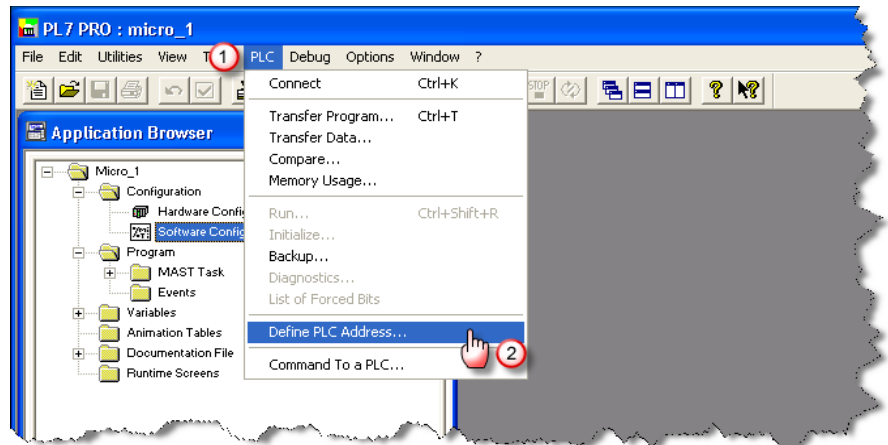
Click on **Add** (2) and then on **Save** (3).

6. End of Ethernet PLC software mapping configuration

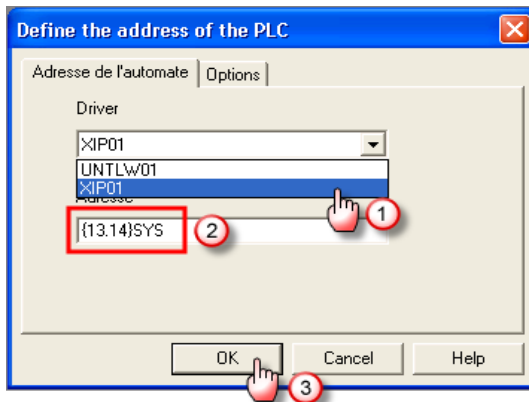
## 8. Establishing remote connection

It is supposed you have been going through the previous steps. Hence, your PLC and the eWON are physically connected either by Unitelway or by Ethernet connection. The steps below are the same for both connection type.

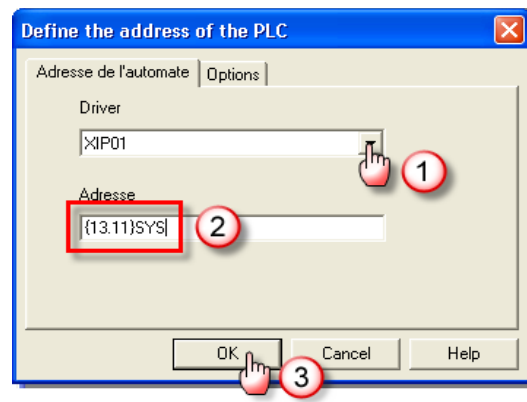
1. Establish the VPN connection to the eWON as explained in [Step 6](#) of the eWON configuration part.
2. Once the Talk2M VPN tunnel towards the eWON is established by eCatcher, start PL7 PRO®
3. Open your project and select **Define PLC Address...** (2) from the **PLC** (1) entry in the menu :



4. Configure the sub-window for XIP, set the **Remote Address** depending on the type of connection you are using:

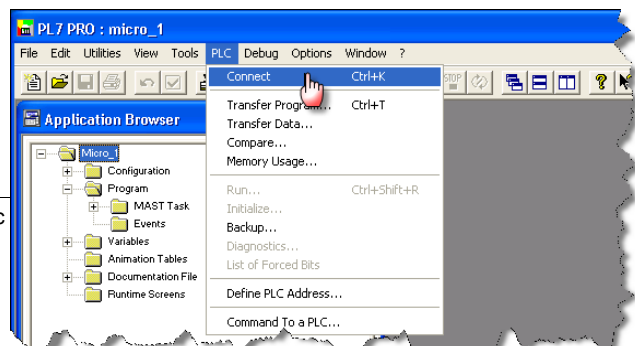


For a **serial** connection:  
 Select the driver profile corresponding to the one defined in XIP configuration (1) in our example XP01  
 set the XWAY address of the **eWON** (2) see § 6.2 [Serial link \(Unitelway\) configuration](#)



For an **Ethernet** connection:  
 Select the driver profile corresponding to the one defined in XIP configuration (1) in our example XP01  
 set the XWAY address of the **PLC** - see (2) § 6.3 [Ethernet link configuration](#)

Click on **OK** (3)



## 8. Establishing remote connection

---

5. Click on the  icon from the toolbar or on **Connect** from the **PLC** entry of the main menu

6. If the communication is OK , you should see ONLINE in status bar and a progress bar if you download/upload your project file.



(if not, check the section [9. Troubleshooting](#)).

7. Your setup is now connected and ready to work in remote programming mode.
8. Once you finished your work with PL7 PRO®...
  - ◆ ...terminate the PL7 PRO® connection through **PLC > Disconnect** and close the application.
  - ◆ ...terminate the Talk2M connection of the eWON explained in [Step 7](#) of the eWON configuration part.
9. End of PLC remote access.

## 9. Troubleshooting

### 9.1 Cannot reach the PLC on its Unitelway port?

If you cannot reach the serial PLC connected to the eWON then verify the following:

- Check [serial link configuration](#) of the eWON (1 ON all others OFF for RS485).
- Make sure you are not connected through VPN tunnel when mapping your PLC with **XWAY Driver Manager**. Establish the tunnel only AFTER that the XIP driver configuration was made and started.

In **XWAY Driver Manager** check if the correct IP address has been configured: You must use either the eWON LAN IP address or the eWON VPN IP address. Check that you use an XIP driver (not the Unitelway one) and that this driver is started (runs in the background). Check eWON's XWAY address.

- Check IOserver configuration in eWON page (Unite protocol settings, eWON XWAY address , etc.)
- Open the eWON Event Log [**Main Menu, Diagnostic, Event Log**] to check for error messages.
- To verify if the eWON serial port and the eWON IOserver is correctly configured you can create a Tag inside the eWON which will poll a register on the PLC. If the polling succeeds, this indicates that the serial connection is working correctly.

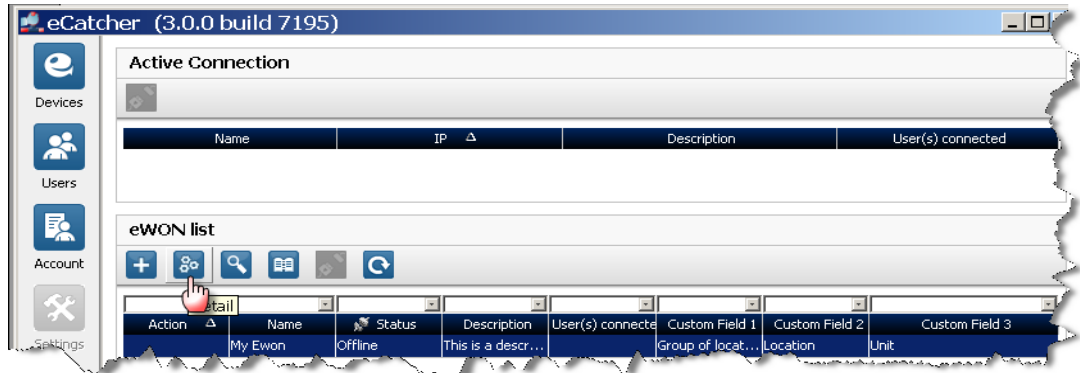
### 9.2 Cannot reach PLC by Ethernet ?

To be able to reach the PLC by Ethernet, the following conditions must be fulfilled:

- Reboot the PLC after IP address and/or gateway change.
- Check that the network LEDs are lighting at both ends. If they aren't, it means there is an issue with the Ethernet cable(s). If you use an eWON having a single Ethernet LAN port (no integrated switch), then you have to use either a **crossed** Ethernet cable (point-to-point with single PLC) or an intermediate switch (multiple PLCs).
- Make sure you are not connected through VPN tunnel when mapping your PLC with **XWAY Driver Manager**. Establish the tunnel only AFTER That the XIP driver configuration was made and started.

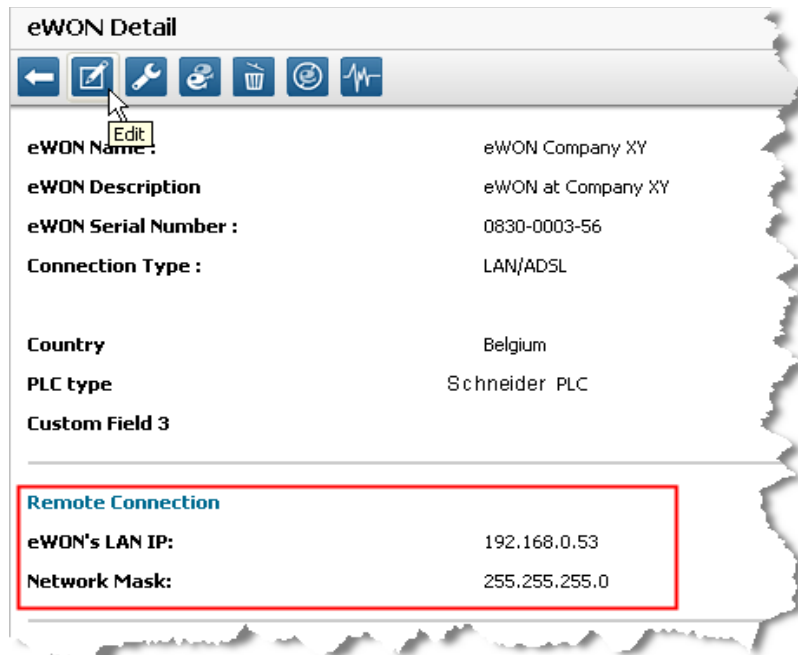
In **XWAY Driver Manager** check if the correct IP address has been configured: You must use either the eWON LAN IP address or the eWON VPN IP address. Check that you use an XIP driver (not the Unitelway one) and that this driver is started (runs in the background). Check eWON's XWAY address.

- You might have a mismatch between the actual IP configuration of the eWON and the eWON LAN IP address configured as Remote Network in your Talk2M account. You can check, and if necessary, modify these settings, in eCatcher. Under the eWON list select the Name of the remote connection and click on the **Detail** button.



The eWON Detail window will open:

Here you will find the different information you entered earlier. The Remote Network is specified under the Remote connection section.



To change the Remote Connection settings, click on the Edit button on the top of the page.

- Once the modification is finished, click on the Save button which is displayed on the top of the window when in edit mode. After the change you would then have to save and **Disconnect** and **Connect** the VPN bridge to the eWON for Talk2M to take the modification into account.
- The remote PLC network must be in a different range than the company network on which your PC is connected. (see Step 1).

## 10. Appendix 1 – Specifics for Modem connections

### 10.1 General

The basic configuration principles remain the same except for typical modem settings. Allow enough time for tasks to be executed when you use a modem link.

In the following explanations, we took the most current example of GPRS/Edge modem. Extrapolating to other modem technologies is rather straight forward.

Only those steps that are different from the LAN/WAN connection are addressed.

### 10.2 Configuring the eWON for Internet connection (Step 2)

1. In the Internet configuration wizard of the eWON, select **Modem Connection** option and, depending on the modem installed in the eWON, the interface asks the user to fill out the different parameters of the relevant modem. Fill out the different fields (PIN code, APN and user name/password) according those you received from your Service Provider. For most Service Providers, User Name and Password can be left empty. Click **Next**.

eWON configuration wizard / Internet Connection

**GSM Modem connection (GPRS/EDGE/3G)**

SIM PIN:   
Enter the SIM PIN code (4 digits). Leave empty if the SIM card does not require a PIN code.

APN:   
The Access Point Name is specified by the GSM operator.

User Name:   
User name as defined by the GSM operator (some operators do not require a username, check with your operator).

Password:   
Password as defined by the operator.

<< Previous      Next >>

2. Configure how the eWON should go online, and click **Next**.

eWON configuration wizard / Internet Connection

**Configure "Go Online" trigger**

**Triggered by outgoing actions**  
eWON will establish the connection each time an internal action needs to connect to the Internet (eMail, FTP, NTP, etc.)

**Maintain connection**  
eWON will establish the Internet connection each time it is broken down.

**Triggered by phone call or outgoing actions.**  
eWON will establish the connection when receiving an external call or during outgoing actions (see above).

<< Previous      Next >>

In most cases, it will be **Triggered by outgoing actions**. This option is needed to be able to use the Wake-Up function. Only check **Maintain connection** if you want to use a permanent connection to your eWON device (which can be very expensive using a GPRS/Edge line).

3. Configure your online time parameters, and click **Next**

eWON configuration wizard / Internet Connection

**Trigger: Connect for outgoing actions**

eWON will establish the connection each time an internal action needs to connect to the Internet. (eMail, FTP, NTP, etc.)

Idle time before hanging up:  Seconds.  
If there is no traffic for this amount of time, eWON will hang up

Max outgoing call duration:  Minutes.  
Maximum duration of any outgoing call.

Enable call budget management.  
When the call budget is exceeded then eWON will close the Internet connection.

<< Previous      Next >>

In most cases, you can leave the default parameters.

The **Max outgoing call duration** is set by default to 60 minutes. The eWON will drop the Talk2M connection after 1 hour. If you need longer connection times, enter a higher value or set it to 0 for no limit.

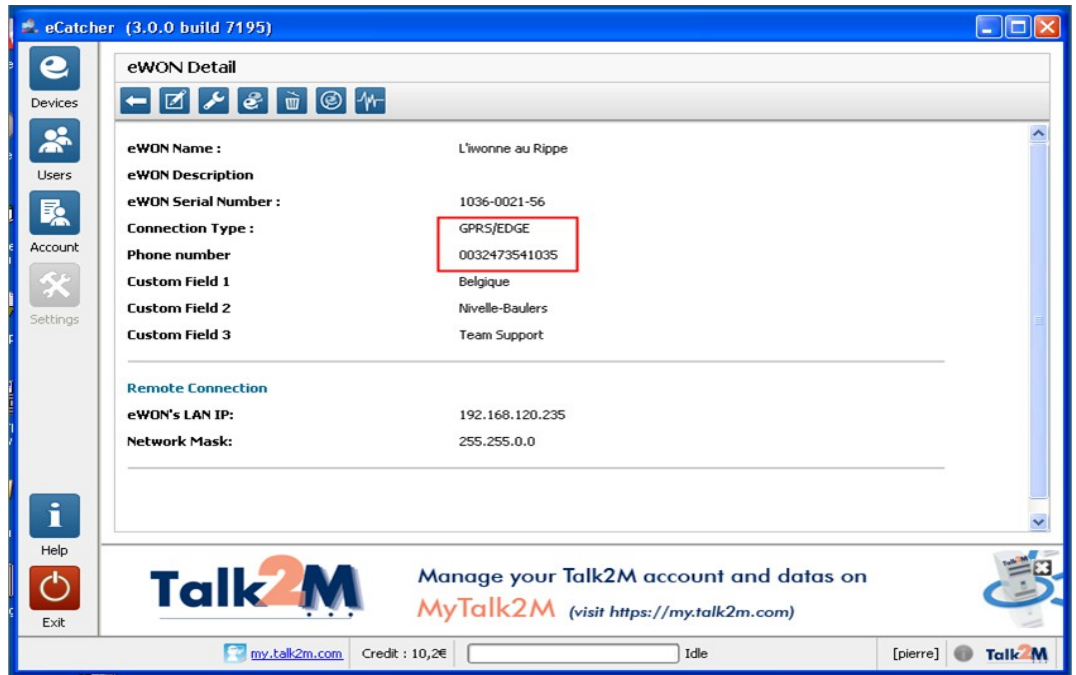
By default, the **Idle time before hanging up** is set to 120 seconds. You can leave this value as is. In fact, it is not a useful parameter for a Talk2M connection because a VPN life bit is periodically exchanged preventing connection interruptions due to idle times.

4. End of Step 2 in Appendix 1.



### 10.3 Creating the eWON in your Talk2M account (Step 3)

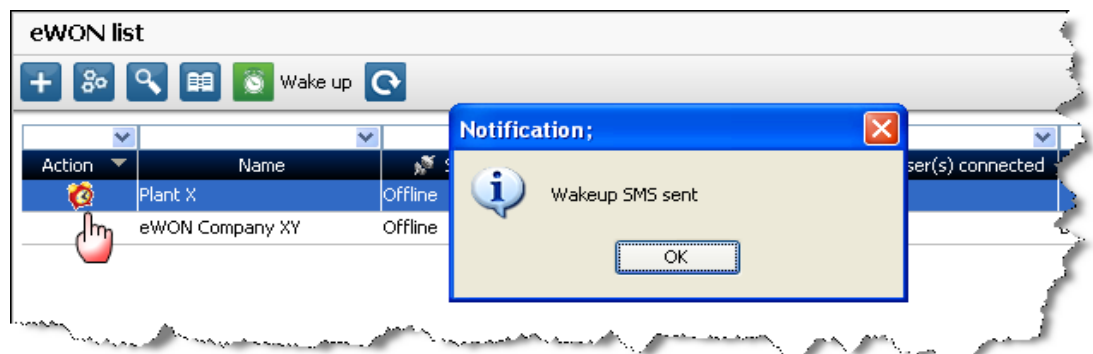
1. In the creation process of the eWON in your Talk2M account, the sole additional steps are:
  - specifying the connection type (in our example GPRS/Edge)
  - entering the phone number



2. End of Step 3 in Appendix 1.

### 10.4 Connecting the eWON remotely (Step 6)

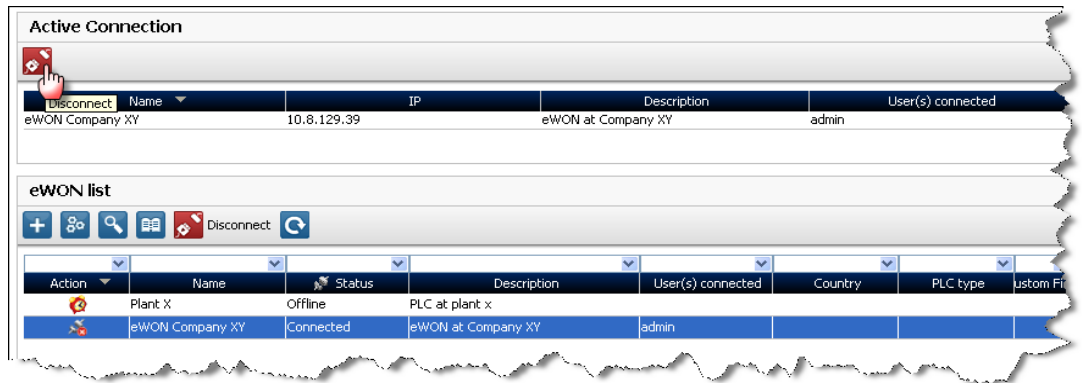
1. If you use an eWON GPRS, then you probably configured the eWON not to stay connected all the time to the Talk2M server. Before being able to connect to the eWON over Talk2M you will first need to wake-up the modem of the eWON. To do this, click on the **Wake-up** icon in front of the eWON name as shown in the following picture:



2. Talk2M sends an SMS (text message) to the eWON to ask the eWON to start its Internet connection and to connect to the Talk2M server. This can take up to several minutes; do not interfere until this process is completed.

Note: You do not necessarily need Talk2M to send the wake-up SMS to the eWON. You can do this using your own GSM (cellular phone). All you need is to have the dial number of the eWON by the hand and to send the following SMS (text-message) to it: "Talk2MConnect" (without quotes).

3. Once the modem is online, the green **Connect** icon is shown to allow to bridge the VPN tunnel.
4. You can now click on the **Connect** button as explained in the LAN/WAN procedure to establish the remote connection.
5. Once the VPN tunnel is bridged the red **Disconnect** icon is shown to allow you to cut the bridge of the VPN connection.



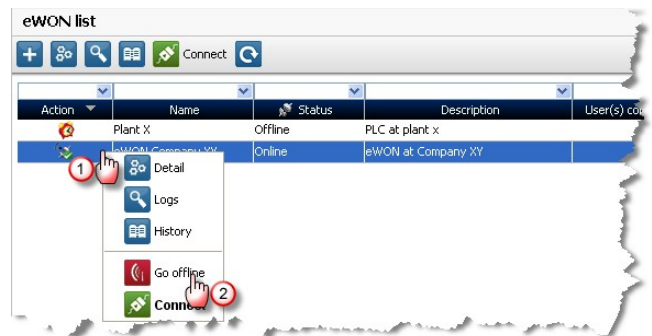
6. End of Step 6 in Appendix 1.

## 10.5 Terminating the remote connection (Step 7)

If the eWON to which you were connected uses a Modem connection for the Internet access, then you probably want to close the Internet connection of the eWON (to save GPRS communication costs). This is done with eCatcher.

Note that there are 2 distinct notions to be considered: **Connect / Disconnect** that applies to bridging the VPN tunnel and **Go Offline** that closes the VPN link and hence the modem connection (on hook)

1. Click on **Disconnect** to cut the VPN bridge.
2. Right-click on the Online icon in front of the eWON. In the context menu click on the **Go offline** button to send the disconnect request to the eWON. The eWON will then close its Internet connection and after a while the eWON will be displayed as offline in your Talk2M account.

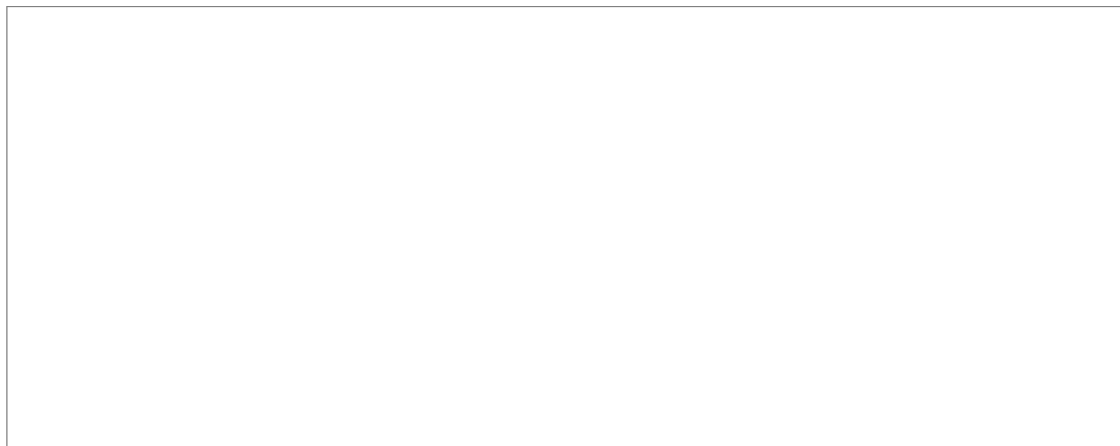


3. End of Step 7 in Appendix 1.

## 11. Appendix 2 – eWON as Gateway in PLC

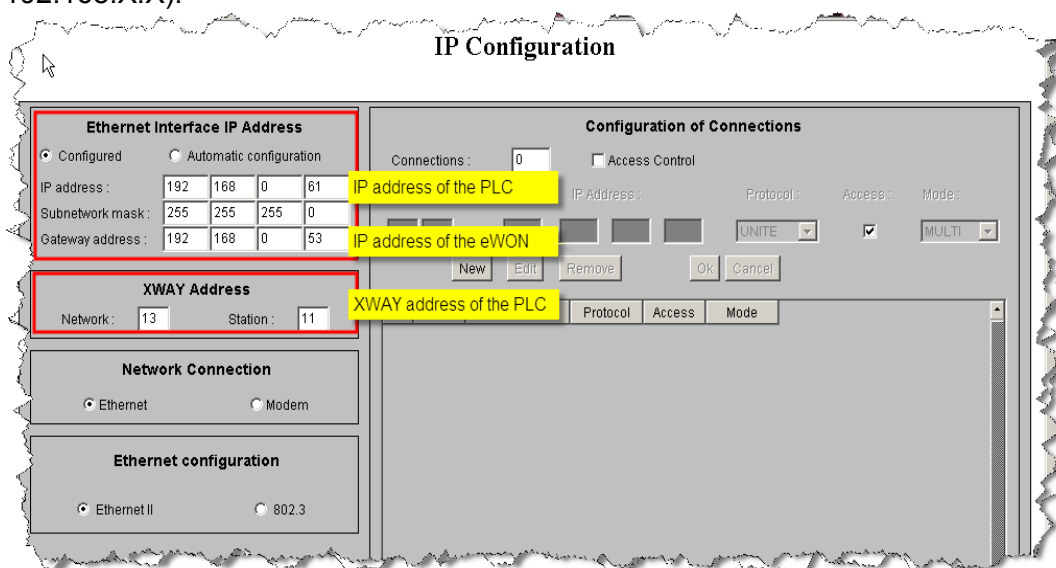
If, for any reason, the **Plug'nRoute** function is not working in your configuration, then you will need to disable the Plug'nRoute feature in the eWON and configure manually the eWON LAN IP address as default Gateway in the configuration of the PLC.

1. To disable the Plug'nRoute function, connect to the eWON web site and click on **Configuration, System Setup** from the **Main Menu**. Navigate further to **Communication, Networking Config, Routing** and the screen below should be displayed:



Select **NAT and TF disabled** from the drop-down menu in the **Apply NAT and TF to connection** click **Update AND reboot** the eWON.

2. Connect your configuration PC (set with a fixed IP in the IP range of Ethernet card module of the PLC). Open your web browser and type the PLC IP in the URL field. Click on the **Online Configuration** and follow the same steps as explained in § 6.3 [Ethernet link configuration](#).
3. Configure the IP address of the PLC module and set the eWON LAN IP address as Gateway Address and check the XWAY Address of the module : Remember that the IP range of the eWON and the Ethernet module has to be the same (here 192.168.X.X).



**Note:** The XWAY address configured here should not be changed as it is the address of the Ethernet card of the PLC (not the one of the eWON).

4. Click on Apply and reboot the Ethernet card (see § 6.3 Ethernet link configuration).
5. You can now make the physical link between the PLC to the Ethernet LAN port of the eWON.
6. End of eWON as Gateway configuration.

**What if you cannot set Gateway on PLC?**

Setting the eWON as Gateway in the PLC is not always possible. In such case, you should first make sure the **Plug'nRoute** feature does not work in your specific case. If so, disable **Plug'nRoute** like explained in point 1 above and **reboot** your eWON.

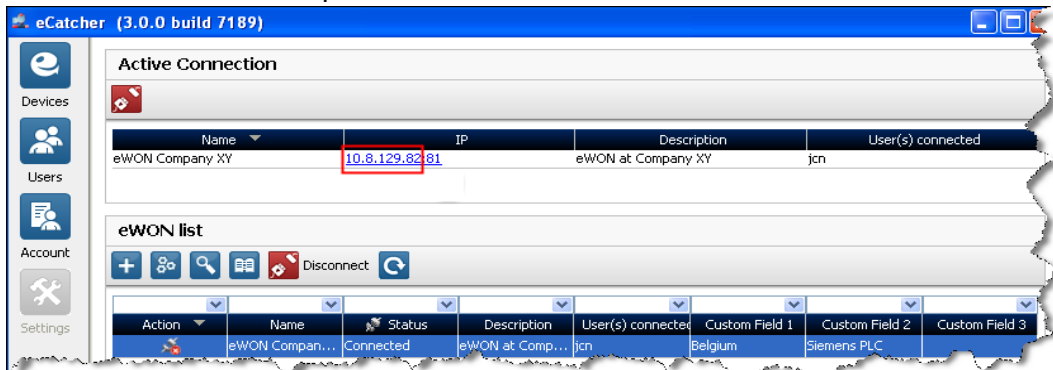
You can now use the **eWON Proxy** feature to allow remote connection to the PLC without mapping the eWON IP address as gateway.

Detailed information on how to do this can be found on the eWON Web site: "How to proxy a PLC protocol" [http://support.ewon.biz/docs/Proxy\\_PLC.htm](http://support.ewon.biz/docs/Proxy_PLC.htm)

When using a Proxy, in combination with a Talk2M Connection, then you need to map the VPN IP address of the eWON in PL7 to allow the remote connection.

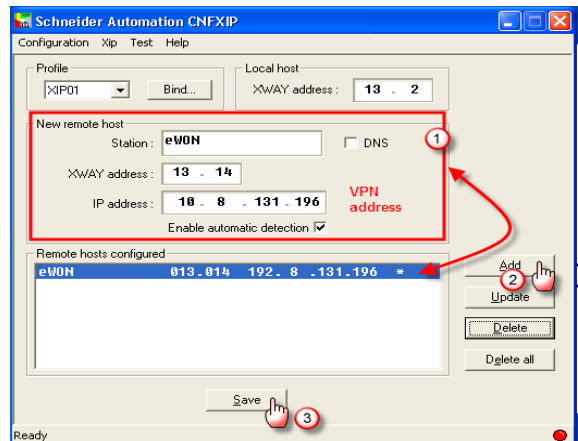
This is impacting:

§ 5.6 Step 6: **Connecting the eWON remotely** - point 5 – you need to fetch the VPN IP address allocated by Talk2M. Keep only the core IP, not the port part, this would be 10.8.129.82 in the example below.



§ 6 **Linking eWON and PLC** – you need to configure the proxy feature of the eWON. See detailed description in document referenced above.

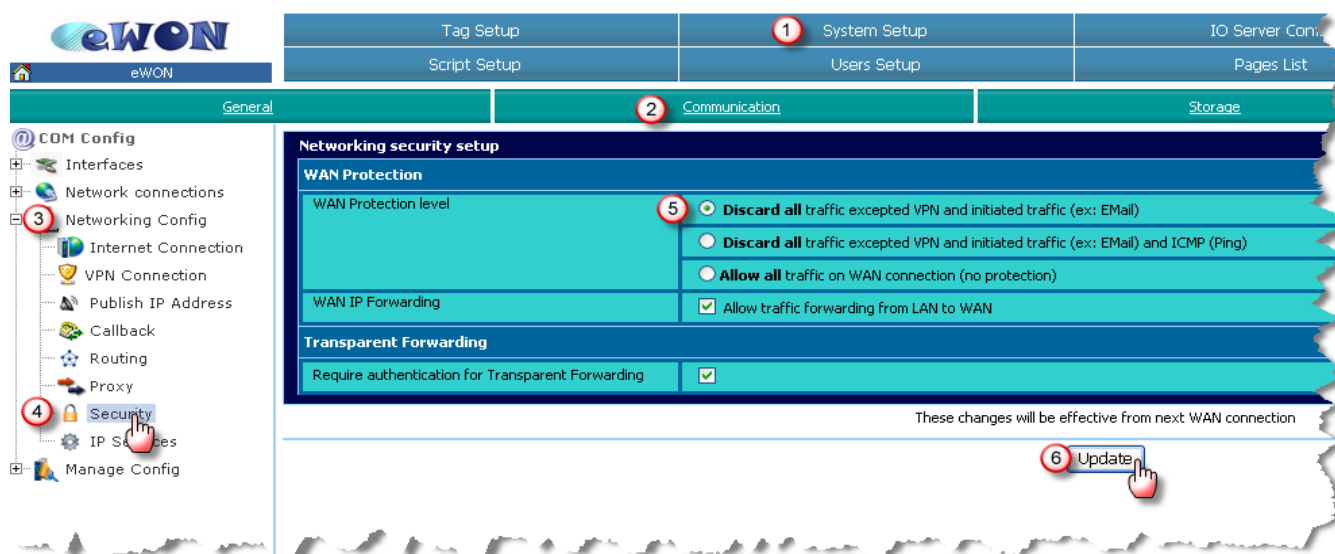
§ 7 **PLC software mapping configuration** you need to map the VPN IP address instead of the eWON LAN IP address.



## 12. Appendix 3 – Security aspects

When using a Talk2M connection, the data you are exchanging is protected by the VPN tunnel.

Your eWON could however still be reached through its WAN connection. You can block this access by setting the WAN protection level to **Discard all traffic excepted VPN and initiated traffic** (5) in the eWON configuration via **System Setup** (1), **Communication** (2), **Networking Config** (3), **Security** (4)



Click Update (6).

When this option is ticked, the WAN connection will only allow traffic using the VPN connection.

If the eWON is configured to use a modem to go out on the Internet, then the WAN connection is the GPRS/EDGE connection. This type of access definitely requires protection.

If the eWON is configured to use its second Ethernet Interface to go out on the Internet, then the WAN connection is the Ethernet WAN port that uses the company infrastructure and benefits from the IT protections in place. Hence, this type of access is less exposed to security issues.

**Note:** The changes applied on this page will only be effective from the next WAN connection. So from the next GPRS connection, or after an eWON reboot if you use the 2<sup>nd</sup> Ethernet port of the eWON for the Internet connection.

Since the eWON firmware version 6.2s0, when the Talk2M wizard is executed, the WAN Security setting is set automatically to **Discard all traffic excepted VPN and initiated traffic**.

## 13. Appendix 4 – Unitelway cable

As serial cable, you can use the standard TSX CX 100 cable from Schneider Electric.

Note that the present manual is assuming you are using an RS485 connection. RS232 cables also exist and can be used, but the dip switches have to be configured accordingly (see [6.2 Serial link \(Unitelway\) configuration](#)).

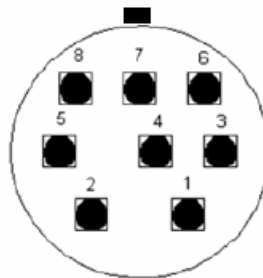
eWON is proposing a compatible cable:

P/N EW40906 - For PLC Schneider Micro, Premium and Twido, Length: 2 meter

Pinout of RS485 cable:

MiniDIN PIN	Schneider Signal Name	eWON Signal Name	eWON SUBD9 PIN
1	D(B)	A+	DB9 pin 3: A+
2	D(A)	B-	DB9 pin 8: B-
3			
4			
5			
6			
7	GND	GND	DB9 pin 5:GND
8			
Connector Shield			

Table 1: Schneider cable pinout



## Revision history

<b>Revision Level</b>	<b>Date</b>	<b>Description</b>
1.0	16/02/12	First issue
1.1	15/12/16	Added "PLC Discovery" to Chapter 6.3

- i Microsoft, Internet Explorer, Windows and Windows XP are either registered trademarks or trademarks of Microsoft Corporation
- ii Firefox is a registered trademark of the Mozilla Foundation
- iii PL7 PRO® and Unitelway® are registered trademarks of Schneider Electric.

Document build number: 88

---

### Note concerning the warranty and the rights of ownership:

*The information contained in this document is subject to modification without notice. The vendor and the authors of this manual are not liable for the errors it may contain, nor for their eventual consequences.*

*No liability or warranty, explicit or implicit, is made concerning quality, the accuracy and the correctness of the information contained in this document. In no case the manufacturer's responsibility could be called for direct, indirect, accidental or other damage occurring from any defect of the product or errors coming from this document.*

*The product names are mentioned in this manual for information purposes only. The trade marks and the product names or marks contained in this document are the property of their respective owners.*

*This document contains materials protected by the International Copyright Laws. All reproduction rights are reserved. No part of this handbook can be reproduced, transmitted or copied in any way without written consent from the manufacturer and/or the authors of this handbook*

*eWON sa, Member of ACT'L Group.*

