



Application User Guide

AUG 060 / Rev. 1.1

M2Web Logo Program

This document explains how to customize the skin of the M2Web portal with your own colours, images and style. You can also learn how to access the M2Web portal via a login / access form implemented directly on your custom web pages

Talk2M

M2Web



Login

Account

Username

Password

[Forgot password](#)



Table of Contents

- 1. M2Web Logo Program 3**
- 2. Displaying the skin 3**
 - iframe mode 3
 - Preview mode 4
- 3. Skin file 4**
 - skin.ini 5
 - Text options 5
 - Color options 5
 - URL options 6
 - Font options 6
 - Pictures 6
 - logo.png 6
 - welcome.png 7
 - Sample file 7
- 4. eCatcher skin tools 8**
- Revision 12**
 - Revision History 12

1. M2Web Logo Program

M2Web Logo Program is a feature allowing users to customize their M2Web portal through a simple skin file.

All of the management takes place using the [eCatcher application](#).

2. Displaying the skin

The skin is displayed automatically when the user accesses the M2Web portal, as soon as his account is given. This means that:

- Going to '<http://m2web.talk2m.com>' won't display the skin
 - upon login, if a skin is set then it will be displayed
- Going to '<http://m2web.talk2m.com/myaccount>' will display the skin if available

- Note -

When a skin is displayed, the account field is hidden. To come back to the old form, you have to remove the account information.

iframe mode

In order to integrate M2Web login form inside an existing website, an iframe mode is available.

This mode allows a minimal login page to be displayed within a frame of your webpage. To use the iframe mode, just append the '*iframe=1*' parameter to the usual URL.

```
http://m2web.talk2m.com/myaccount?iframe=1
```

The iframe mode and preview mode are compatible.

Following is a sample HTML listing integrating the M2Web login form into an iframe.

```
<html>
  <head>
    <title>My own webpage</title>
  </head>
  <body>
    <h1>Login to your management page</h1>
    <iframe src="https://m2web.talk2m.com/myaccount/?iframe=1">
      <p>Your browser does not support iframes, please go to <a
href="https://m2web.talk2m.com/myaccount/">M2web's login page</a>
    </iframe>
  </body>
</html>
```

- Note -

If using an HTML5 doctype, it might be useful to add the attribute "sandbox" in the iframe tag such as: `<iframe src="https://m2web.talk2m.com/myaccount/?iframe=1" sandbox="allow-forms allow-top-navigation">`

Preview mode

In order to develop and correct a skin without putting it live, a preview mode is available.

To display a preview skin, just append the 'preview=1' parameter to the usual URL.

```
http://m2web.talk2m.com/myaccount?preview=1
```

3. Skin file

The skin file is a simple ZIP archive with following structure:

- **skin.ini:** required, text file containing various options
- **logo.png:** optional, PNG picture displayed on top-right of the website (within the banner)
- **welcome.png:** optional, PNG picture displayed on the left of the login form

Following limitations apply:

- files should be at the root of the ZIP archive. No folder or sub-folder.
- archive should not be password protected
- archive size must be less than 350KB

skin.ini

The skin.ini file is an INI file containing a list of key/values options responsible for the rendering of your custom style.

Those options are written with the following syntax:

- keys contain only alphabetical or underscore characters and must belong to the known options list
- values must be enclosed in single quotes and vary in format. Specific format are described for each options in the list
- key and value are separated by the sign equal "="
- comments may be added using a leading semicolon ";"
- end of line may be either UNIX or DOS

Text options

Text options are string of up to 150 characters (e.g.: 'Logo Program Inc.').

- **logo_alt**: alternative text to the logo picture, this text will be displayed if the logo picture is absent
- **welcome_alt**: alternative text to the welcome picture

Color options

Color options are either an hexadecimal color code preceded with a sharp sign or a CSS color keyword¹.

- **banner_color**: color displayed in the top banner block
- **iframe_font_color**: iframe mode only, font color used for the login form
- **iframe_background_color**: iframe mode only, background color used for the login form

¹ See https://developer.mozilla.org/en-US/docs/Web/CSS/color_value#Color_keywords for keywords reference.

URL options

URL options must be a valid URL (e.g: '<http://www.google.com>').

- **terms_of_use:** URL pointing to a custom terms-of-use text, located in the bottom right corner
- **logo_link:** URL pointing to a website (user's company for instance), the link will be set on the logo picture

Font options

Font options are used to define fonts only on the iframe with the following syntax:

- **iframe-font:** <font-size> [<font-list>]
 - <font-size>: <size><unit> | <absolute-size> | <relative-size>
 - <size>: numerical value
 - <unit>: one of '%', 'pt', 'px', 'em'
 - <absolute-size>: one of 'xx-small', 'x-small', 'small', 'medium', 'large', 'x-large', 'xx-large'
 - <relative-size>: one of 'smaller', 'larger'
 - <font-list>: <font-name>[, <font-name>[, ...]]
 - <font-name>: string with alphanumerical characters, space and hyphens

'10px' or 'xx-small Century Gothic'

Pictures

logo.png

This is the logo picture displayed on the top right of the screen within the banner. Following limitations apply:

- **size:** up to 100KB
- **width:** up to 400px
- **height:** up to 100px
- **format:** valid PNG

welcome.png

This is the picture displayed on the left of the login form. It won't appear in iframe

mode. Following limitations apply:

- **size:** up to 250KB
- **width:** up to 250px
- **height:** up to 500px
- **format:** valid PNG

Sample file

Following is a sample skin.ini file

```
; Banner color
banner_color = '#dae74e'
; Commented out color banner
; banner_color = 'salmon'

; Alternative text for logo
logo_alt = 'My company is great'
; Alternative text for welcome
welcome_alt = 'My company: great service provider'

; URL targeted by the logo link
logo_link = 'http://www.mygreatwebsite.com'

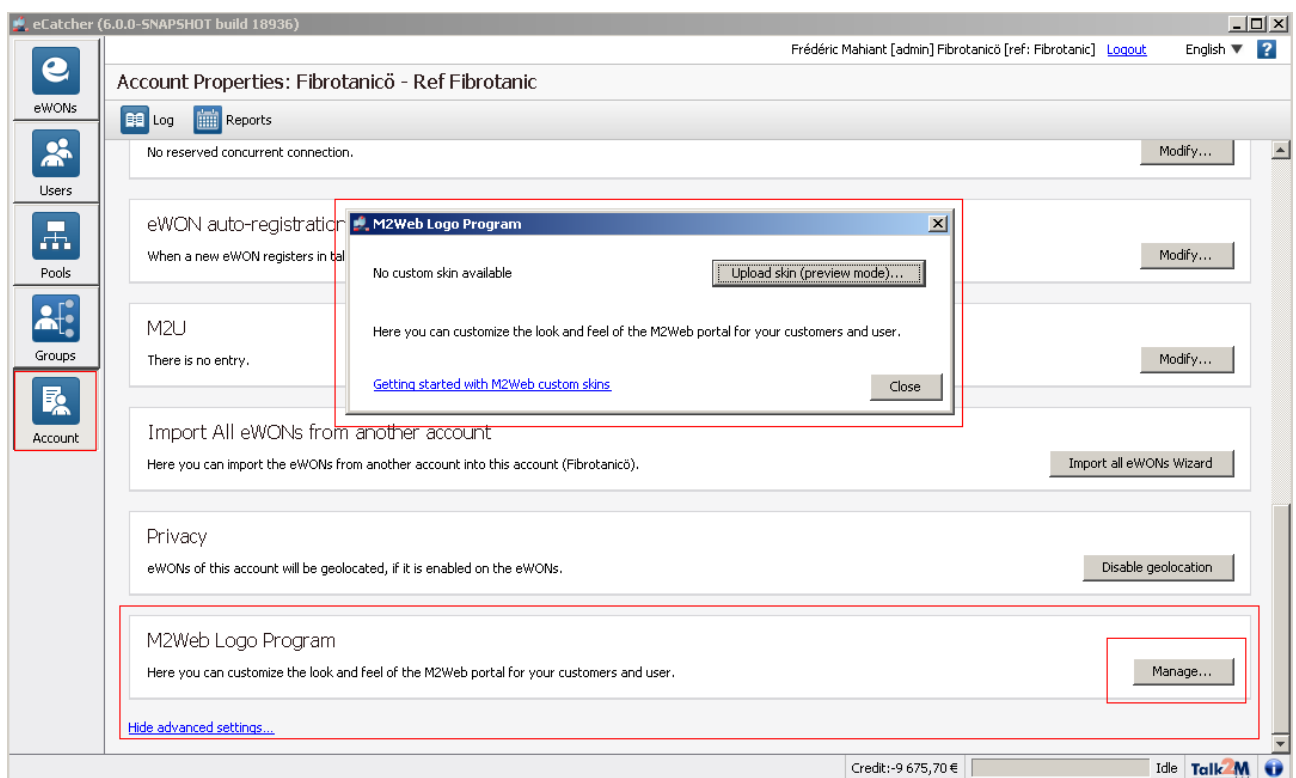
; iframe mode specific options
; Login form text font
iframe_font = '1em Droid Sans Mono, monospace'
; Login form text color
iframe_font_color = 'white'
; Login form background color
iframe_background_color = '#555588'
```

4. eCatcher skin tools

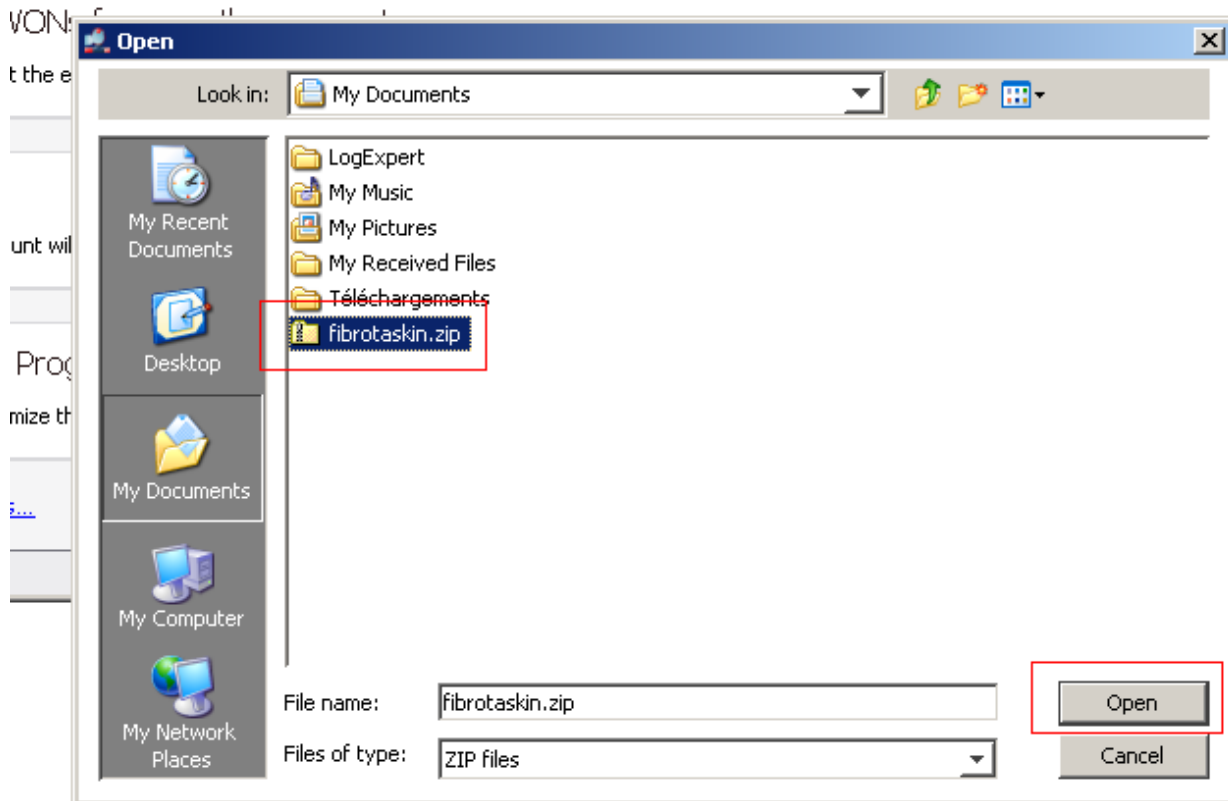
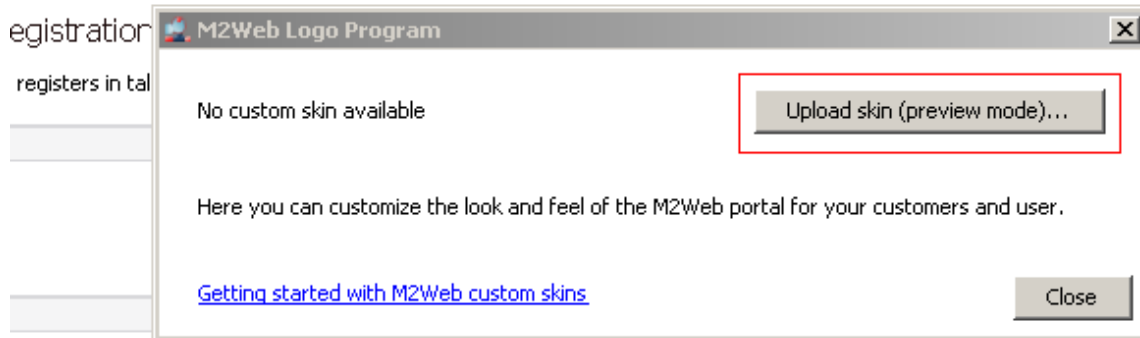
Starting eCatcher v6.0, the application integrates a simple interface to manage skins. This is only accessible to account's administrators.

This interface is accessible through

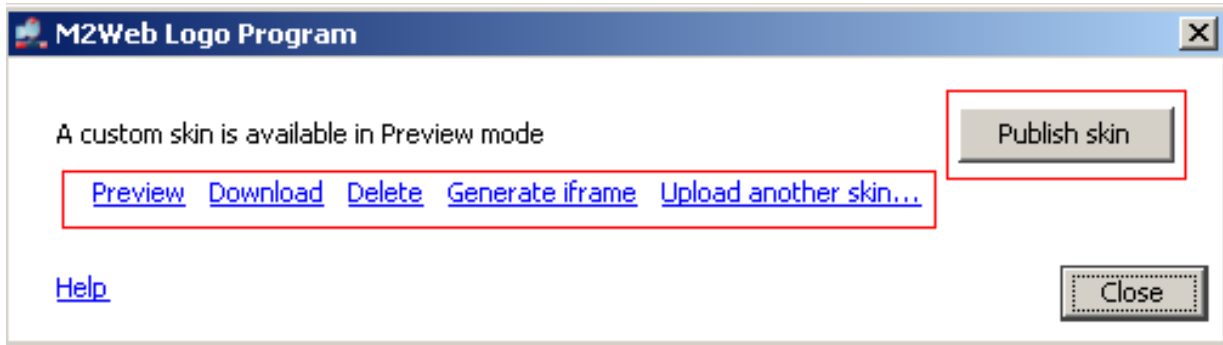
Account > Show Advanced Settings > M2Web Logo Program: Manage



To upload a new skin, click on “**Upload skin (preview mode)...**” button, select the desired skin file and then click the “**open**” button.



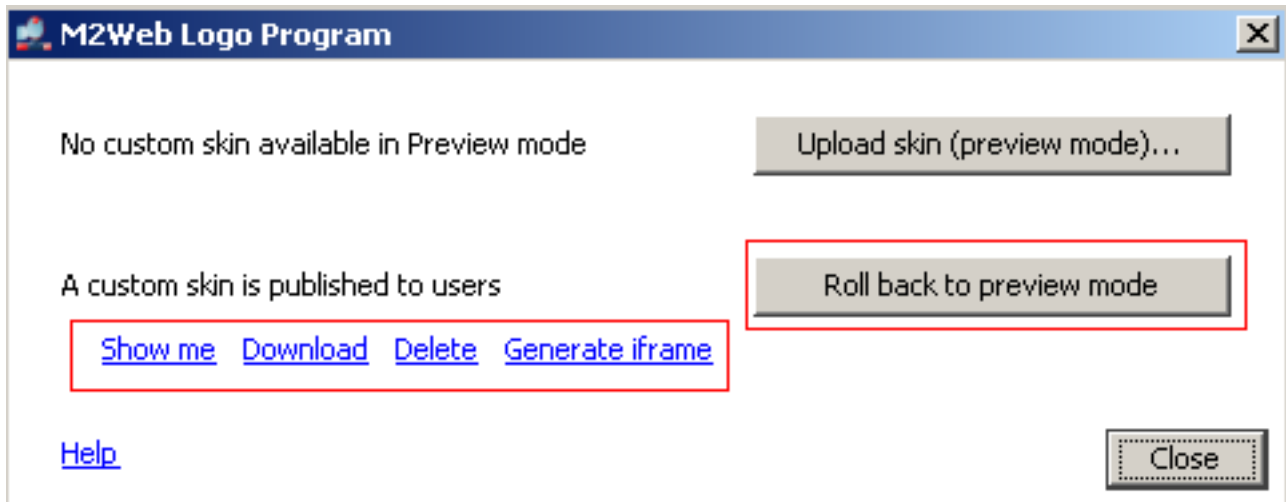
Once the file is uploaded, new options are available.



- **Preview:** link to the M2Web portal with preview enabled (will open default browser)
- **Download:** retrieve and save the preview skin file from Talk2M on your computer
- **Delete:** remove the preview skin
- **Generate iframe:** opens a dialog with generated HTML code to integrate into a website (with preview mode enabled)
- **Upload another skin:** send a new skin file to overwrite current one

Clicking the “**Publish skin**” button will put the preview skin into production.

Once the skin is switched new options are available.



- **Show me:** link to the M2Web portal (will open default browser)
- **Download:** retrieve and save the production skin file from Talk2M server
- **Delete:** remove the production skin
- **Generate iframe:** opens a dialog with generated HTML code to integrate on a webpage



Chapter 4

eCatcher skin tools

Clicking the “**Roll back to preview mode**” switches the production skin back into preview mode. The production skin is now the one Talk2M offers by default.

Uploading a new preview skin is still possible (without replacing current production skin).



Revision

Revision History

Revision Level	Date	Description
1.0	15/12/2015	Original Document
1.1	30/11/2016	Chapter 3, Font section modification

Document build number: 36

Note concerning the warranty and the rights of ownership:

The information contained in this document is subject to modification without notice. Check <http://www.ewon.biz/support> for the latest documents releases.

The vendor and the authors of this manual are not liable for the errors it may contain, nor for their eventual consequences.

No liability or warranty, explicit or implicit, is made concerning the quality, the accuracy and the correctness of the information contained in this document. In no case the manufacturer's responsibility could be called for direct, indirect, accidental or other damage occurring from any defect of the product or errors coming from this document.

The product names are mentioned in this manual for information purposes only. The trade marks and the product names or marks contained in this document are the property of their respective owners.

This document contains materials protected by the International Copyright Laws. All reproduction rights are reserved. No part of this handbook can be reproduced, transmitted or copied in any way without written consent from the manufacturer and/or the authors of this handbook.

eWON sa, Member of ACTL Group