



## Application User Guide

AUG 070 / Rev. 1.3

# PLC discovery through Talk2M

Learn how to configure the eWON and the eCatcher software in order to discover the PLC available on a distant network that you are connected to through the Talk2M connection.



# Table of Contents

- 1. Introduction ..... 3**
  - Requirements ..... 3
- 2. eWON & eCatcher configuration ..... 4**
  - Configure the eWON ..... 4
  - Configure eCatcher ..... 5
- 3. PLC Configuration ..... 6**
  - Rockwell ..... 6
  - Siemens ..... 7
  - Mitsubishi ..... 9
  - Schneider ..... 10
  - ABB ..... 11
- Revision ..... 12**
  - Revision History ..... 12

## 1. Introduction

The PLC discovery feature makes it possible to display devices that support broadcast or multicast messages and are connected to a remote network while the user is being connected to this remote network through Talk2M VPN connection.

### Requirements

To use this feature, three conditions are needed:

- the eWON must have a firmware version  $\geq 12.0s1$
- the eWON must be rebooted when parameter has been activated
- eCatcher software version must be  $\geq 6.2$

eWON must be configured to activate the Discovery feature.

On eCatcher side, the Discovery feature is enabled by default.

See following chapter for more details

## 2. eWON & eCatcher configuration

As said in the [#1.1.Requirements](#) chapter, the eWON firmware must be  $\geq$  v12.0s1 and eCatcher version must be  $\geq$  v6.2

### Configure the eWON

By default, the discovery is disabled in the eWON.

To see other devices even if they are not in the same network range, a single parameter needs to be changed

The parameter to enable is called "BroadcastForwarder" and is located in the comcfg.txt file. To change it, different ways to do it:

- Through FTP: upload a text file named comcfg.txt that has as content the following line:

```
BroadcastForwarder:#
```

where # is either:

- 1 – feature is enabled
- 0 – feature is disabled
- Through the Tabular edition inside the eWON embedded website.  
When connected to your eWON, go to

```
System Setup > Storage > Tabular Edition > Edit COM cfg
```

Search for the "BroadcastForwarder" parameter and modify its value:

- 1 – feature is enabled
- 0 – feature is disabled

To complete the activation of the parameter, the eWON needs to be restarted.

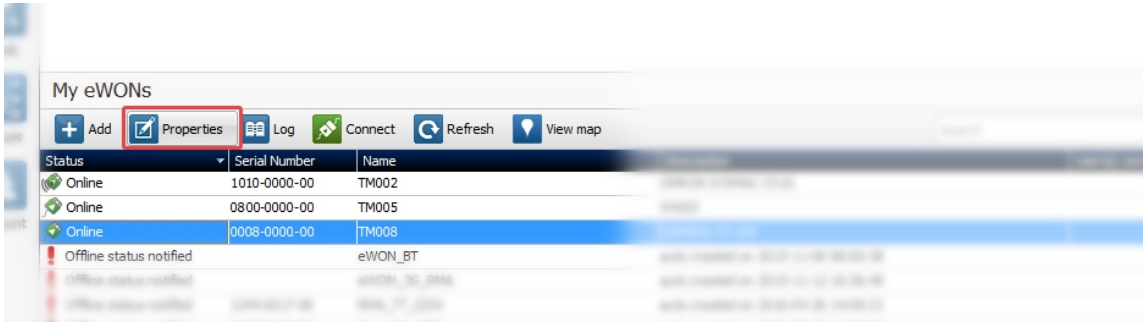
### - Warning -

*Enabling the discovery feature on the eWON will generate additional traffic through the VPN tunnel. If many broadcast and multicast are used on the local network (eWON LAN side), than this additional traffic can be huge. Therefore we recommend to disable the discovery feature after the intervention.  
Don't forget to reboot the eWON to take the Discovery feature change into account.*

**Configure eCatcher**

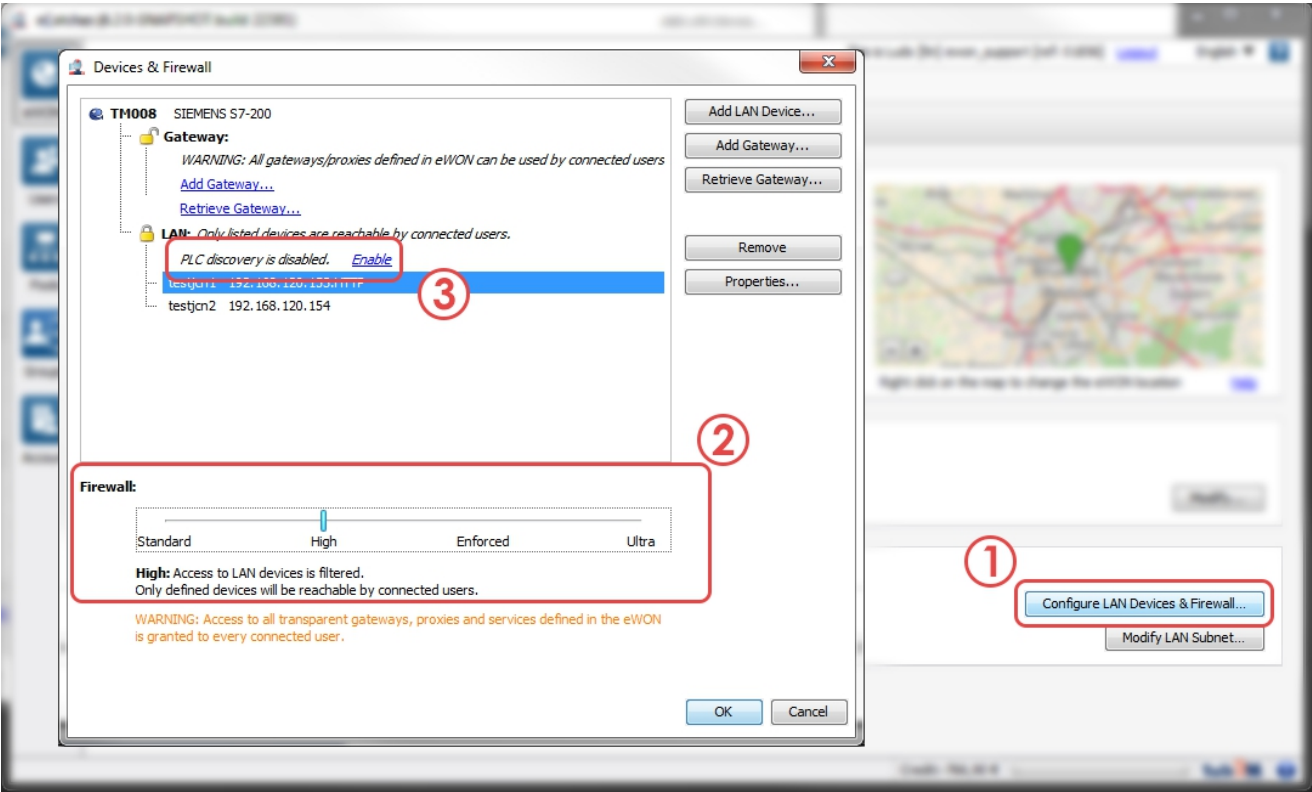
By default, the discovery is enabled in eCatcher.

To configure it, go to the Properties of the concerned eWON:



Once in the Properties of the targeted eWON, configure the LAN Devices & Firewall. If the firewall is in its Standard mode, the PLC discovery option will not be shown. The firewall level must be higher than Standard.

By setting the firewall to High, Enforced or Ultra (for Talk2M PRO version), a new option will show up allowing the activation (or not) of the PLC discovery feature.

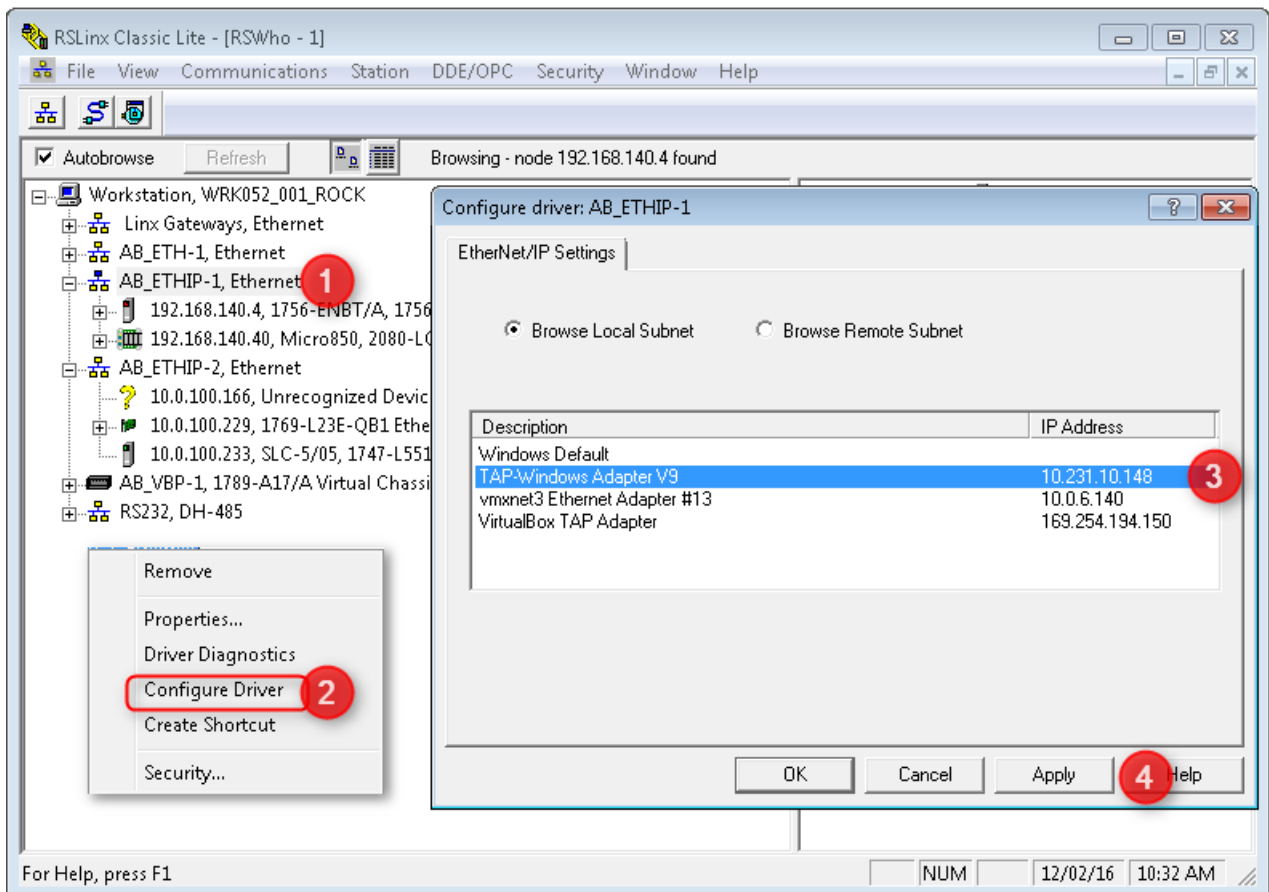


### 3. PLC Configuration

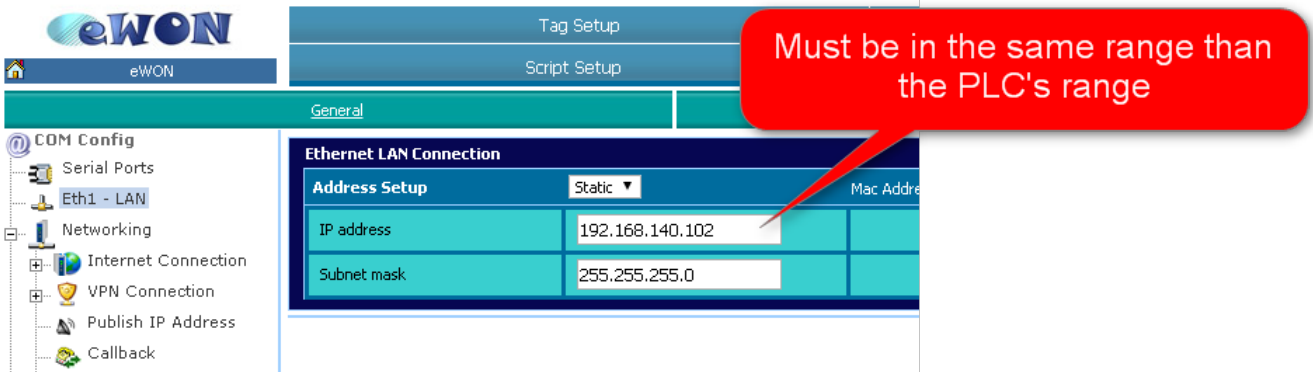
A description on how to configure the PLC software, depending on its brand, in order for the software to see all PLC devices available on the network is explained here under.

#### Rockwell

Once RSLinx is opened, right-click on the targeted protocol in order to edit its driver. When asked which driver should be chosen, select the "TAP Adapter" in the "Browse Local Subnet" tab which refers to the eCatcher connection.

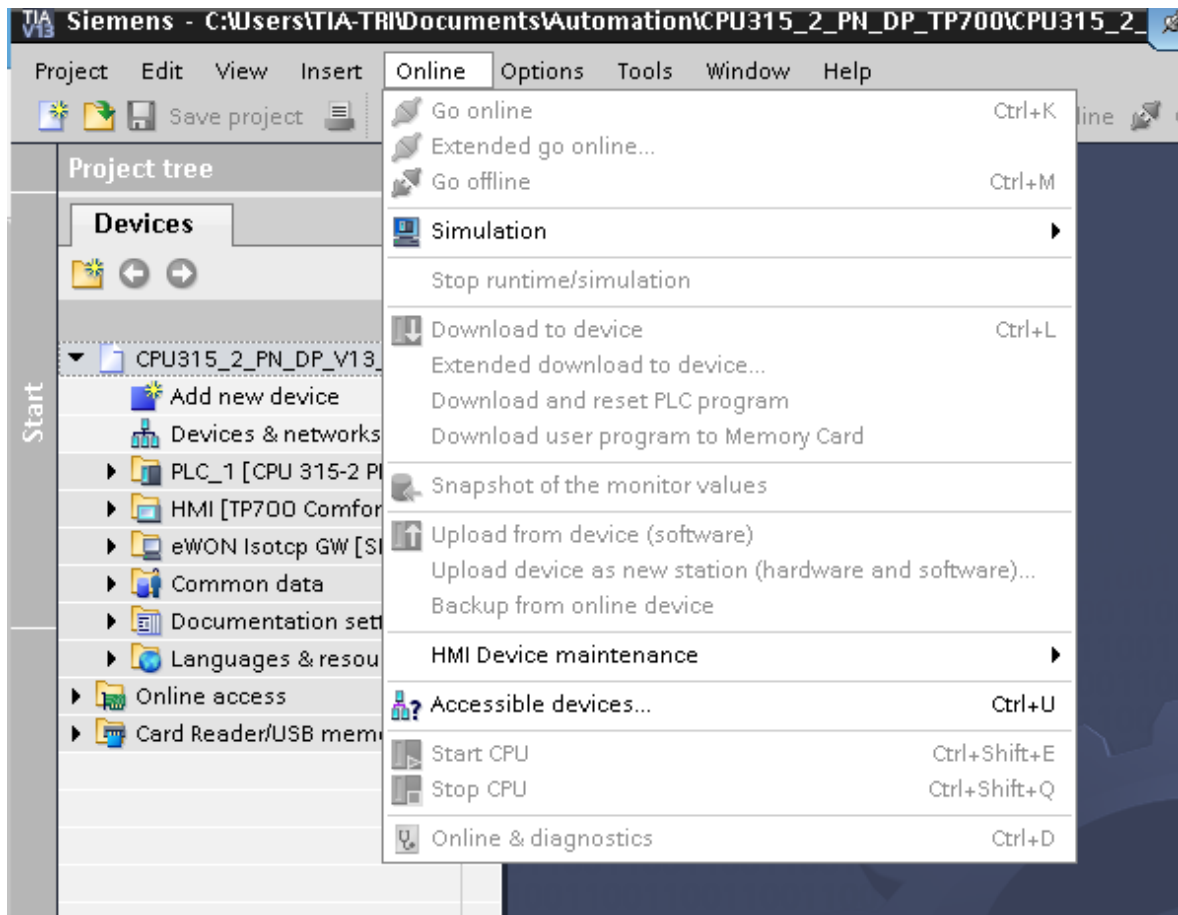


It is important to notice that in the Rockwell case, the eWON must be in the same IP range than the PLC itself.

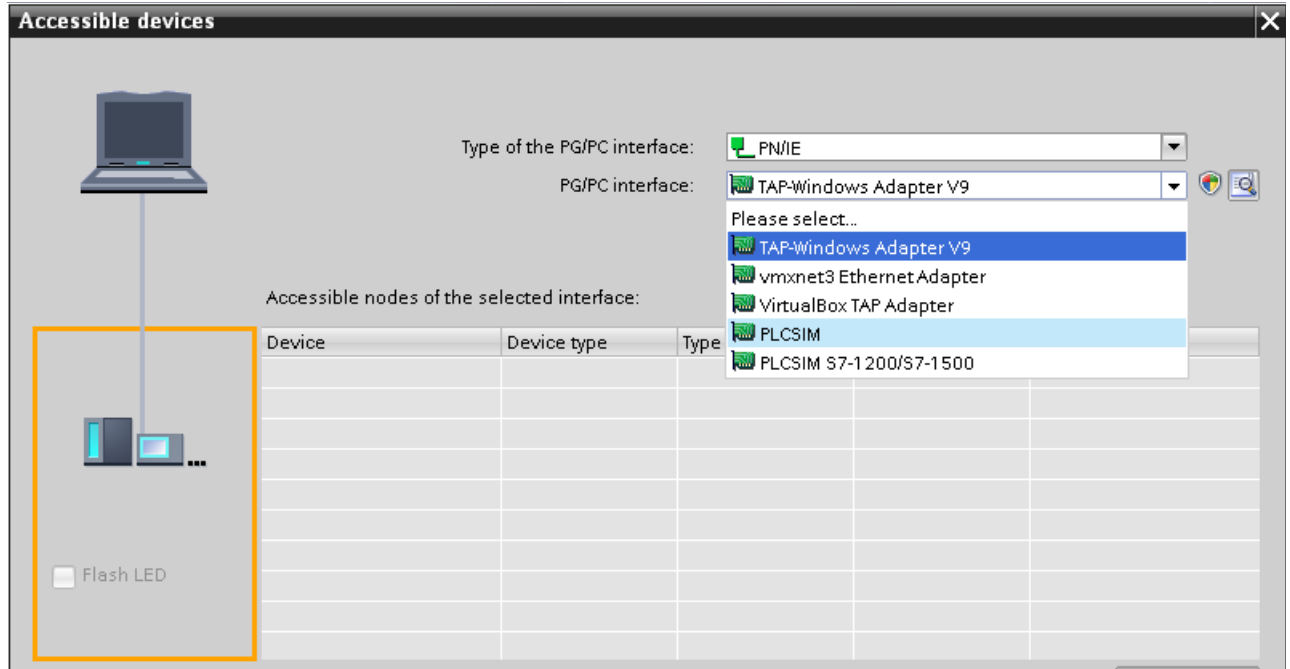


## Siemens

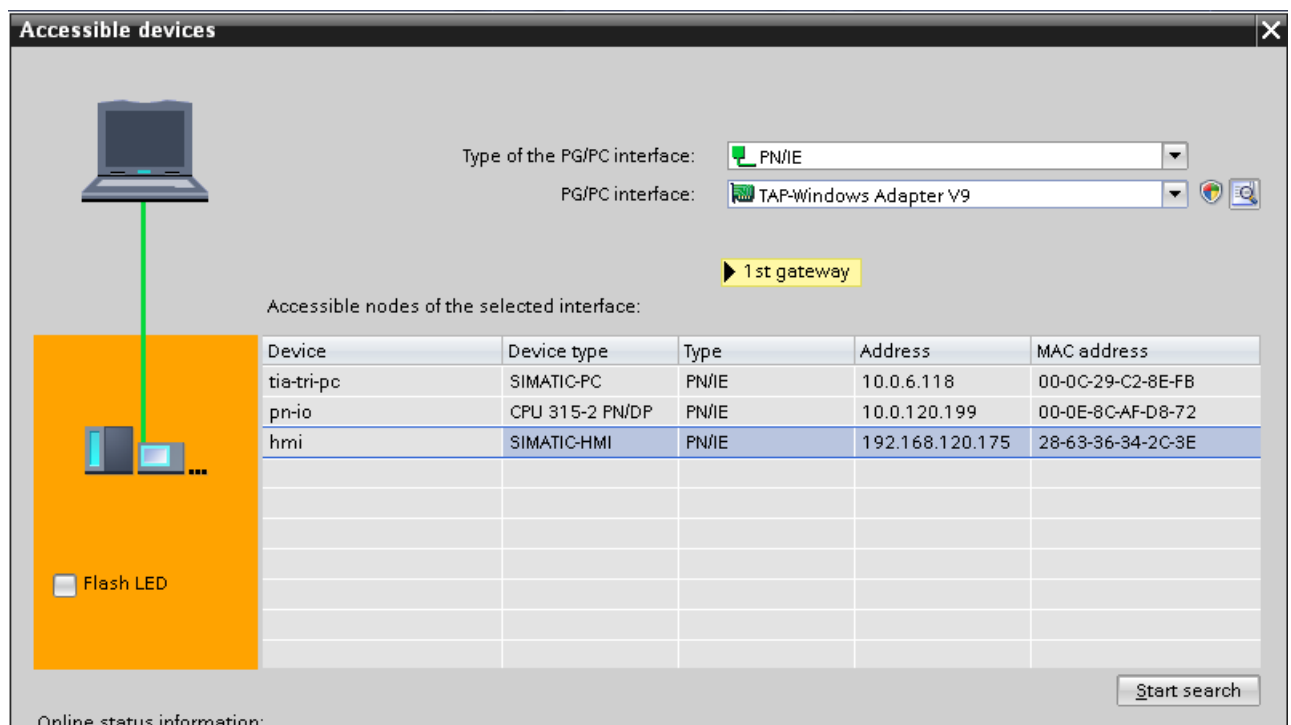
Once the Siemens software is opened, open the “Accessible devices” frame by either pressing CTRL+U or via the contextual menu “Online”.



In the PG/PC interface, select the “TAP Adapter” which refers to the eCatcher connection.



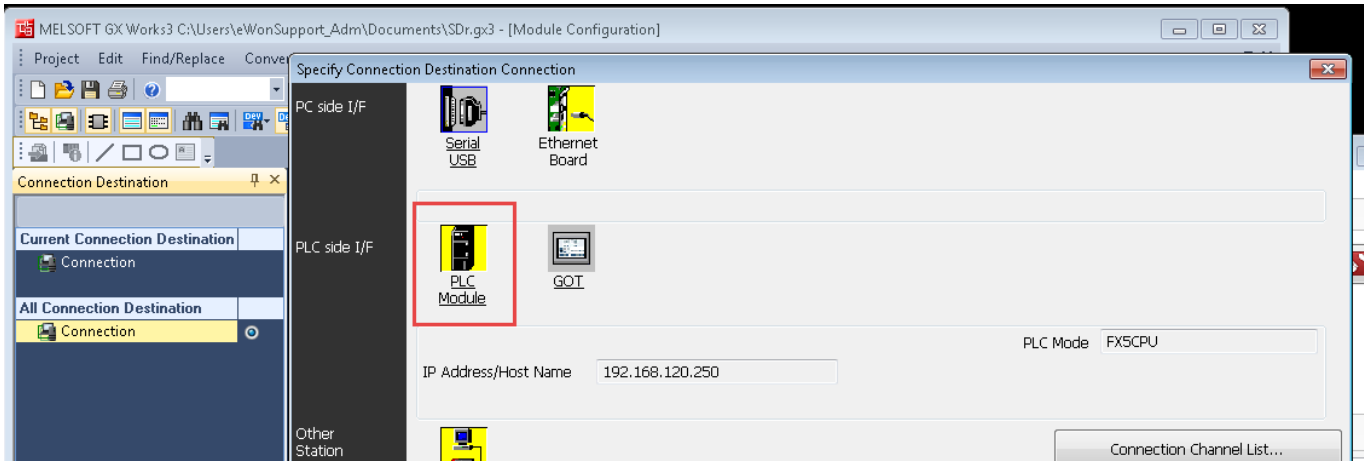
All available nodes should now appear in the list underneath.





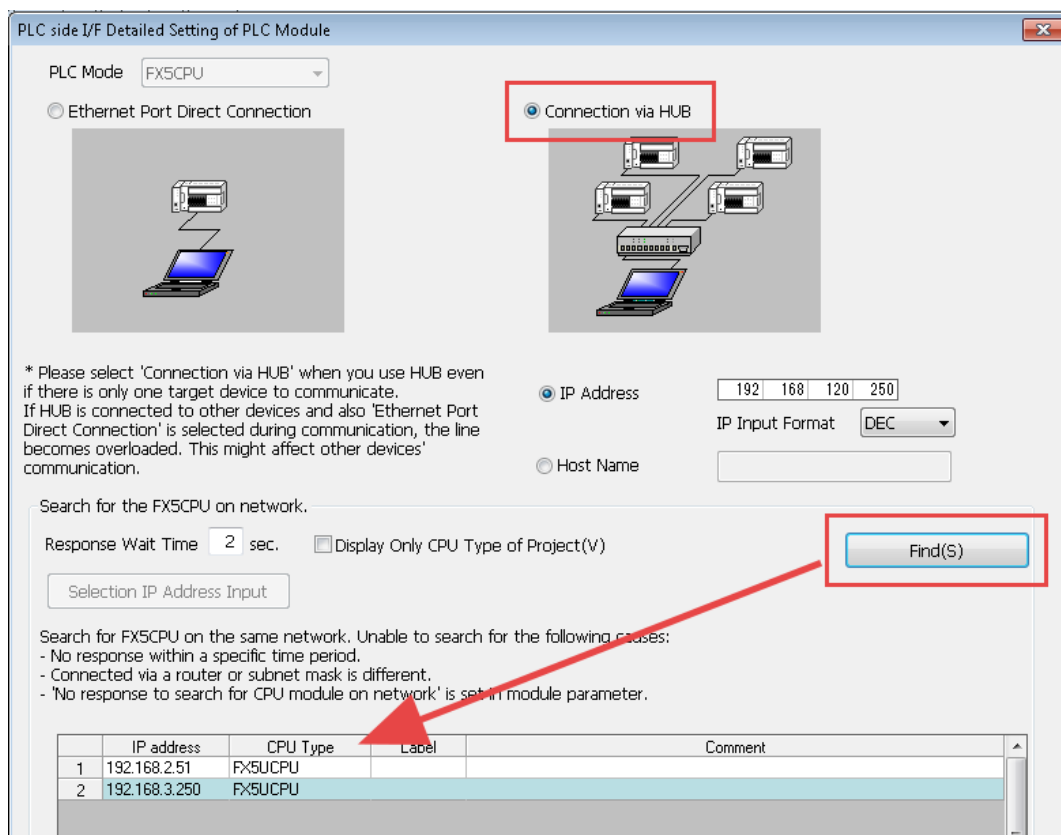
## Mitsubishi

Once MELSOFT is opened, specify a Connection Destination and click on PLC Module



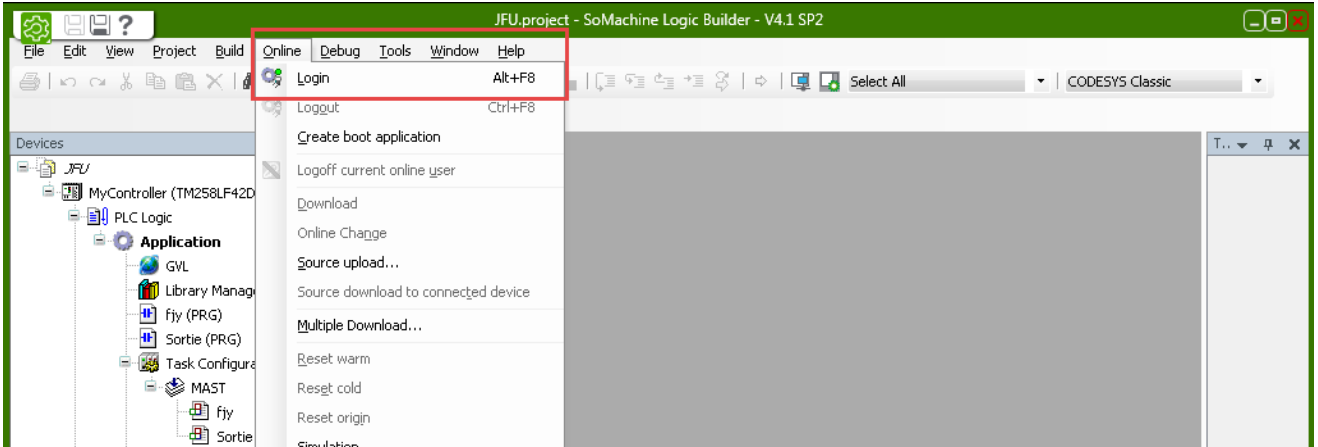
A new window appears. First select the “Connection via HUB” option (if it is not selected, the “Find” button stays disabled).

Click on the “Find” button. This will display all available Mitsubishi devices in the table at the bottom of the window. By selecting the correct device, the “IP Address” field will be changed to match the one selected.

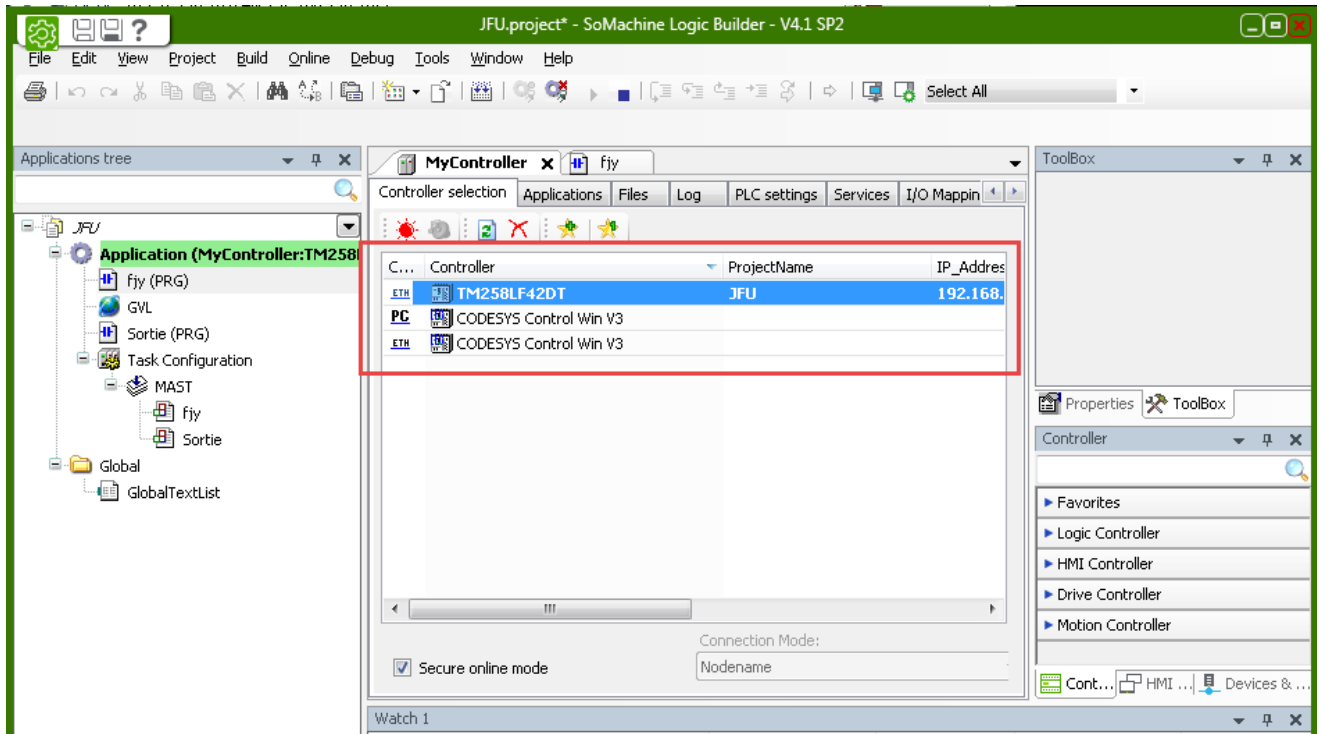


### Schneider

Once the Schneider software opened, click on the “Online” menu then click on the “Login” option (ALT+F8 shortcut).

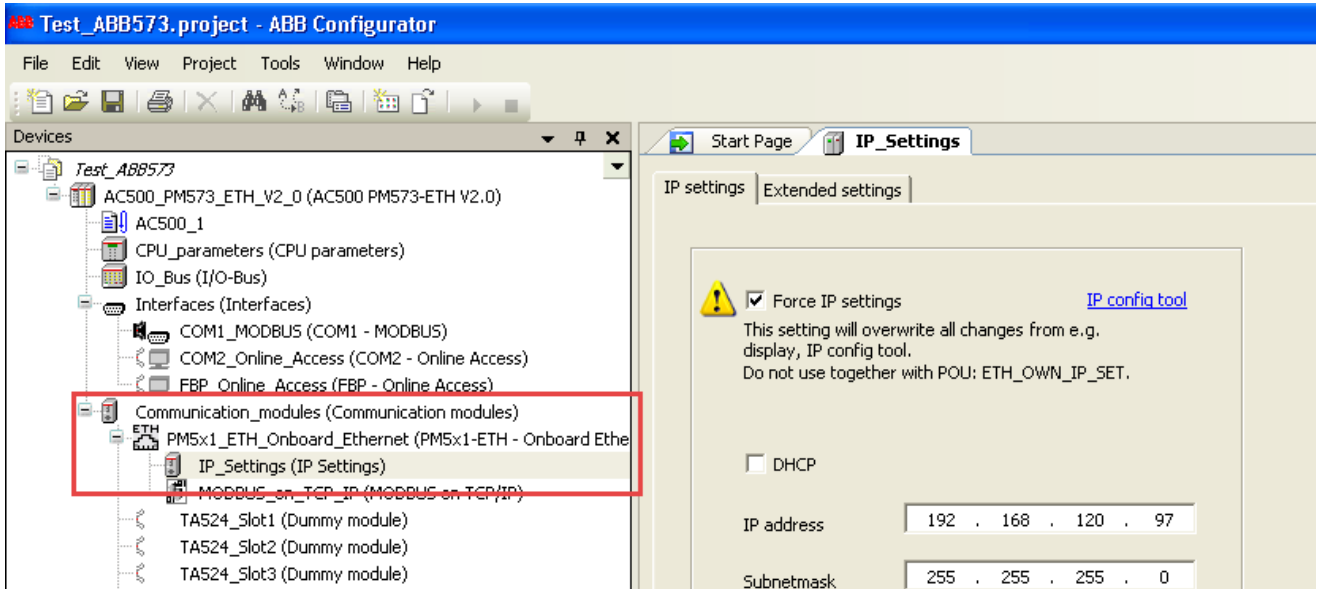


A new interface show up, displaying the possible connection. The PLC discovery is already in action.

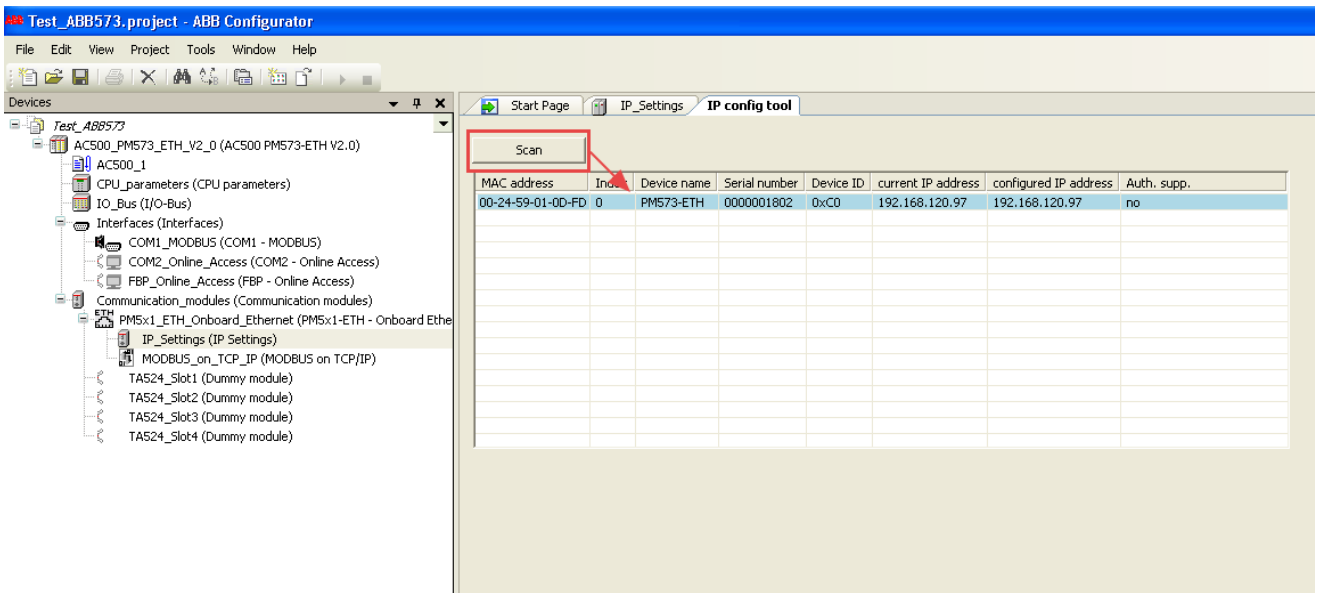


## ABB

Once the ABB software is opened, double-click on “Communication\_modules” link or go directly inside “IP\_Settings”. A new frame opens where “IP config tool” must be clicked.



In the new window, click on “Scan” to see all available ABB devices on the network.





## Revision

### Revision History

| Revision Level | Date       | Description   |
|----------------|------------|---|
| 1.0            | 23/12/2016 | Original Document                                       |
| 1.1            | 06/03/2017 | CHANGED: Adapted COMCFG parameter to BroadcastForwarder |
| 1.2            | 28/03/2017 | ADDED: Reboot necessity                                 |
| 1.3            | 03/01/2018 | ADDED: Warning for additional traffic                   |

### Document build number: 32

#### Note concerning the warranty and the rights of ownership:

The information contained in this document is subject to modification without notice. Check <https://ewon.biz/support> for the latest documents releases.

The vendor and the authors of this manual are not liable for the errors it may contain, nor for their eventual consequences.

No liability or warranty, explicit or implicit, is made concerning the quality, the accuracy and the correctness of the information contained in this document. In no case can the manufacturer's responsibility be called for direct, indirect, accidental or other damage occurring from any defect of the product or mistakes coming from this document.

The product names are mentioned in this manual for information purposes only. The trade marks and the product names or marks contained in this document are the property of their respective owners.

This document contains materials protected by the International Copyright Laws. All reproduction rights are reserved. No part of this handbook can be reproduced, transmitted or copied in any way without written consent from the manufacturer and/or the authors of this handbook.

eWON sa