

eFive - Establish a VPN client connection from my PC

In some circumstances it may be required to link your PC also to the eFive VPN network.

If your PC is physically connected to the eFive LAN network, then you will have access to all VPN clients without any supplementary action. Your PC should just have the eFive LAN IP address as default gateway.

If your PC is not connected to the eFive LAN network, then to make part of the same VPN network, you'll need to establish a VPN connection from your PC to the eFive.

To achieve this you'll need to install and to configure an OpenVPN client on your PC.

An easy way is to use our VPN client called eGrabIt, the eFive connection tool. Refer to following document for further explanations: [AUG-052 \(eGrabIt - eFive Connection Tool\)](#)

Instead of using our eGrabIt software, you can also use a general OpenVPN client software like described here under.

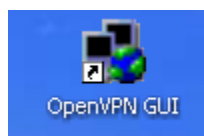
The different steps listed here under explain how to proceed:

- **Create a new VPN account on your eFive for the PC VPN connection**

1. Save the CA certificate of your eFive on your PC and rename the file for example "eFive_cacert.pem". This file will be required later during VPN client configuration on the PC.
2. For every PC to connect, create a new VPN account inside the eFive specifying a username and a password.

- **OpenVPN GUI configuration**

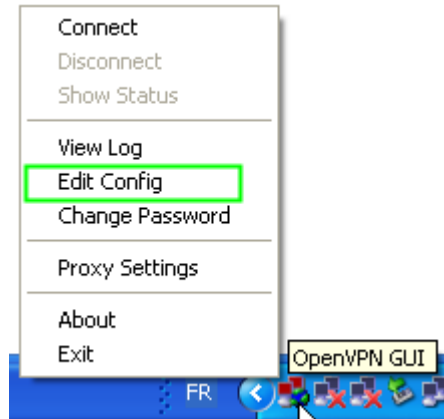
1. Install an OpenVPN GUI on your PC.
You can download the OpenVPN GUI Windows installer from here:
<http://swupdate.openvpn.org/community/releases/openvpn-2.2.2-install.exe>
2. On your PC, inside directory "C:\Program Files\OpenVPN\config", copy following openvpn configuration file: eFive.ovpn
3. Get the CA Certificate from your eFive (named eFive_cacert.pem) and copy the file inside the same directory ("C:\Program Files\OpenVPN\config").
4. Start the OpenVPN GUI application.



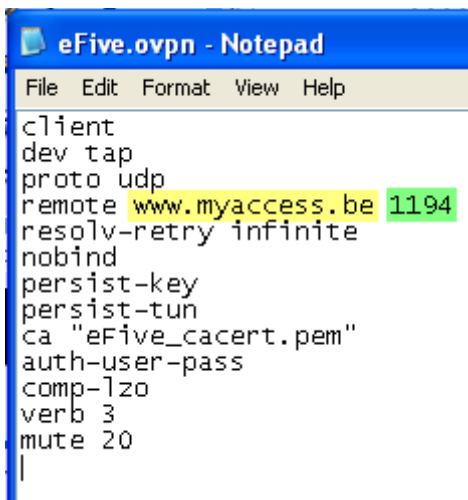
The OpenVPN GUI icon will appear inside the status bar of your PC.



- Right click the OpenVPN GUI icon to open the contextual menu and select the "Edit Config" option.



- The Efive.ovpn configuration file will be displayed. You'll need to adapt now in this file the public IP address on which your eFive can be reached.



```

client
dev tap
proto udp
remote www.myaccess.be 1194
resolv-retry infinite
nobind
persist-key
persist-tun
ca "eFive_cacert.pem"
auth-user-pass
comp-lzo
verb 3
mute 20
  
```

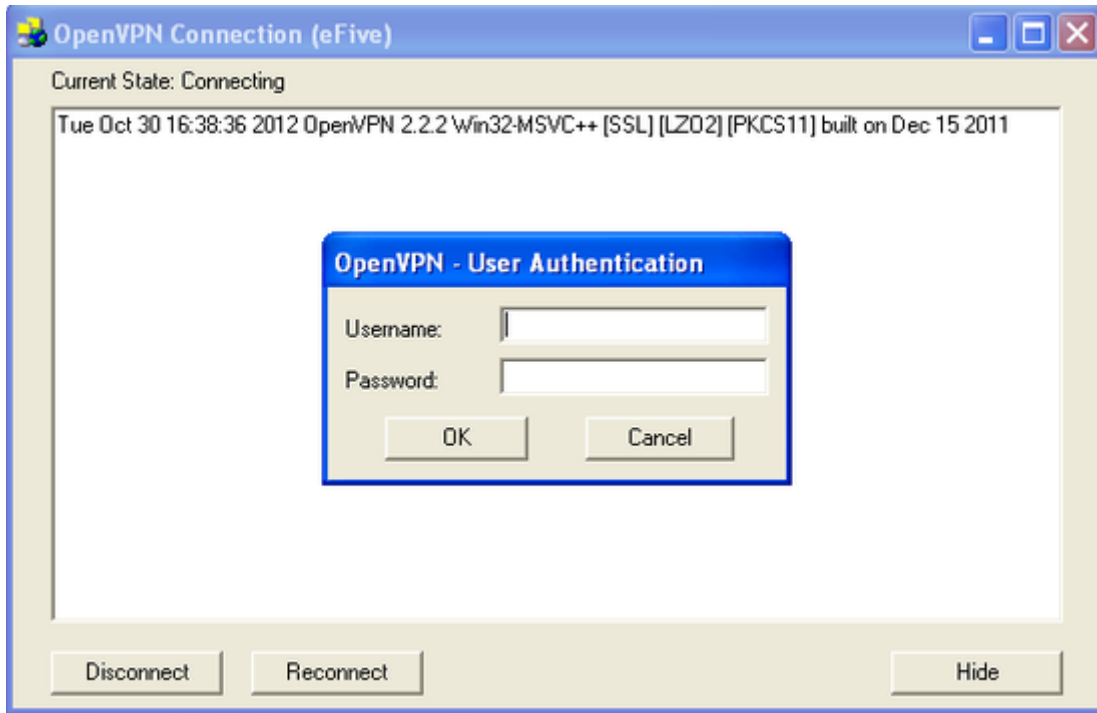
- Note -

If you do not use standard VPN settings (UDP 1194) on your eFive then also adapt here the port and protocol used.

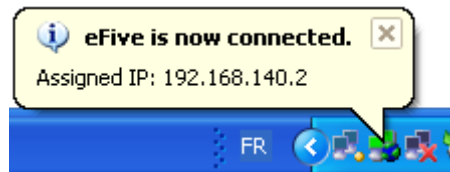
- Save and close the configuration file.
The VPN client configuration is now terminated.
- Connecting/disconnecting the VPN client
 - To connect your PC to the efive VPN server, double-click on the OpenVPN GUI icon.



2. Enter the VPN account username and the password you created for this user.



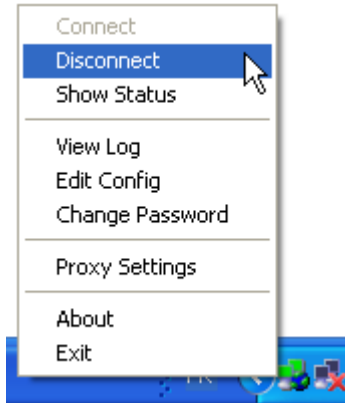
3. Once the VPN connection established, the connection status window will close and the connection status will be displayed on the status bar:



4. You can check the connection status at anytime, simply by moving the mouse over the OpenVPN GUI icon on the status bar.



5. To disconnect the VPN connection just double click on the OpenVPN GUI Icon and click on Disconnect inside the contextual menu.





Revision

Revision History

Revision Level	Date	Description
1.0	23/09/2013	Creation of document

Document build number: 54

Note concerning the warranty and the rights of ownership:

The information contained in this document is subject to modification without notice. Check <http://wiki.ewon.biz> for the latest documents releases.

The vendor and the authors of this manual are not liable for the errors it may contain, nor for their eventual consequences.

No liability or warranty, explicit or implicit, is made concerning the quality, the accuracy and the correctness of the information contained in this document. In no case the manufacturer's responsibility could be called for direct, indirect, accidental or other damage occurring from any defect of the product or errors coming from this document.

The product names are mentioned in this manual for information purposes only. The trade marks and the product names or marks contained in this document are the property of their respective owners.

This document contains materials protected by the International Copyright Laws. All reproduction rights are reserved. No part of this handbook can be reproduced, transmitted or copied in any way without written consent from the manufacturer and/or the authors of this handbook.

eWON sa, Member of ACT'L Group