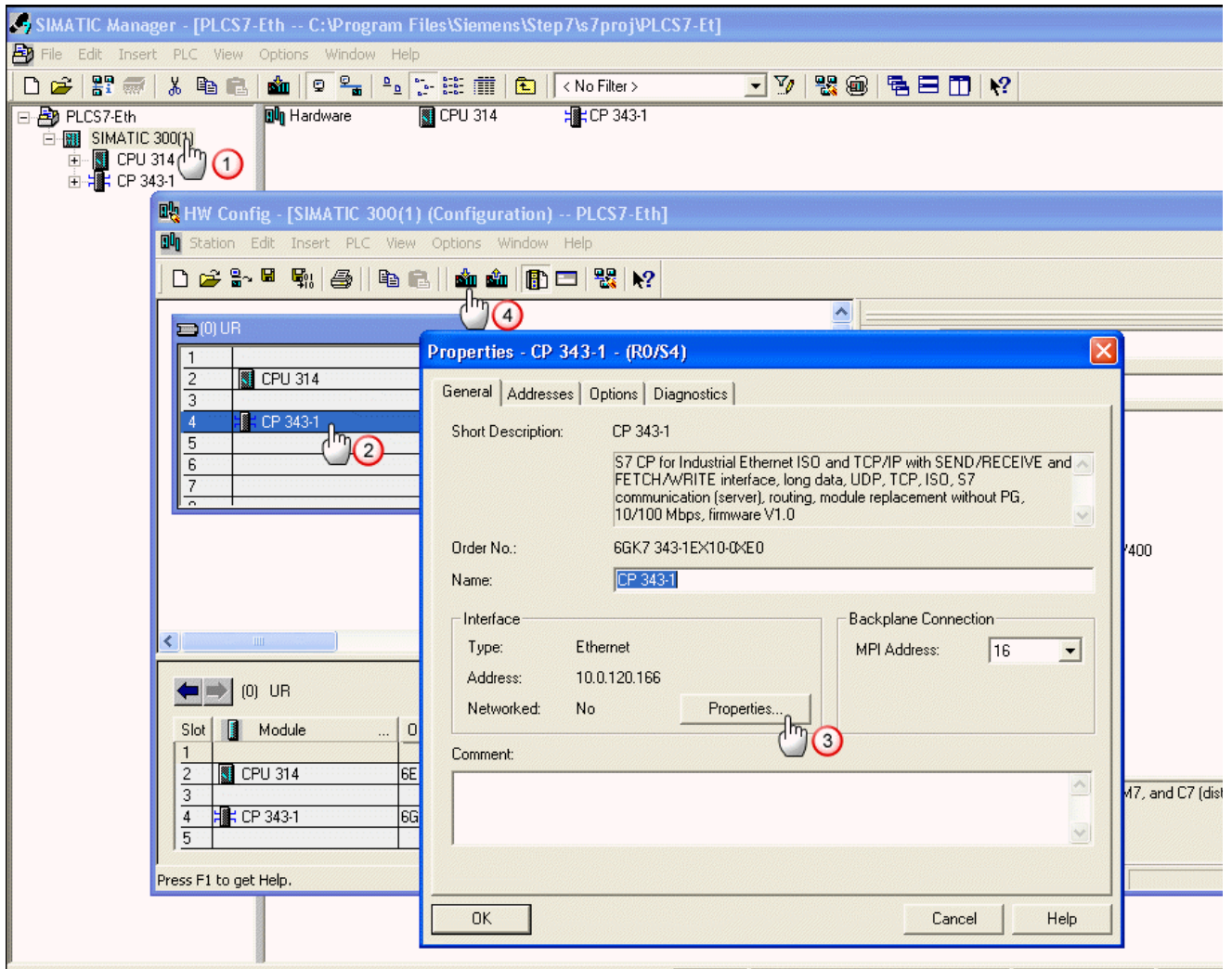
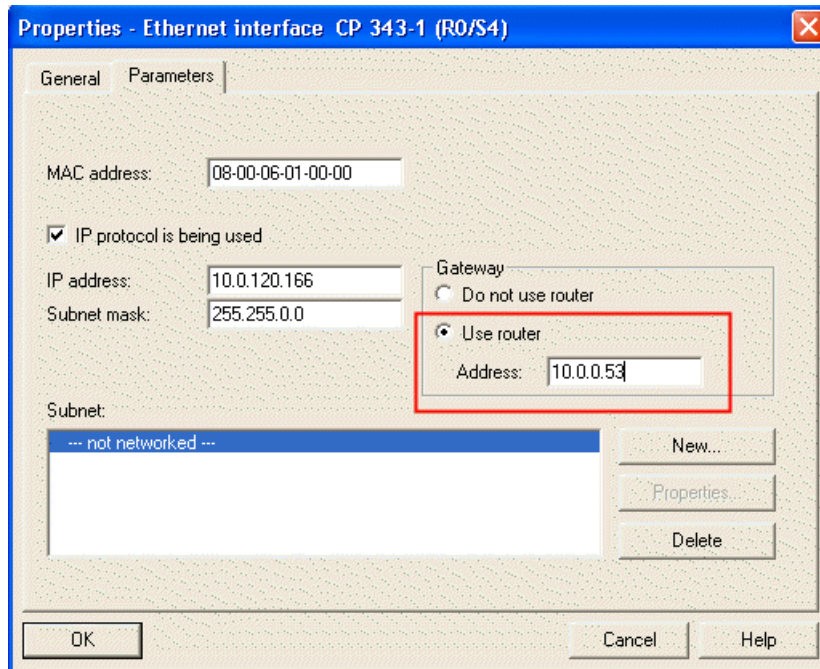


Set the eWON as Gateway with the S7-300 Ethernet Card



1. Right click on the PLC object to open the context menu and click on 'Open Object'.
2. Double click on the Ethernet network card to open the properties window.
3. Click on the 'Properties' button to open the 'Properties - Ethernet interface' window.
4. Set the eWON LAN IP address as gateway as shown in the picture hereunder.
5. Click on the "Download to module" button to download the hardware config to the PLC.



Revision

Revision History

Revision Level	Date	Description
1.0	05/03/2010	Creation of document

Document build number: 11

Note concerning the warranty and the rights of ownership:

The information contained in this document is subject to modification without notice. Check <http://wiki.ewon.biz> for the latest documents releases.

The vendor and the authors of this manual are not liable for the errors it may contain, nor for their eventual consequences.

No liability or warranty, explicit or implicit, is made concerning the quality, the accuracy and the correctness of the information contained in this document. In no case the manufacturer's responsibility could be called for direct, indirect, accidental or other damage occurring from any defect of the product or errors coming from this document.

The product names are mentioned in this manual for information purposes only. The trade marks and the product names or marks contained in this document are the property of their respective owners.

This document contains materials protected by the International Copyright Laws. All reproduction rights are reserved. No part of this handbook can be reproduced, transmitted or copied in any way without written consent from the manufacturer and/or the authors of this handbook.

eWON sa, Member of ACT'L Group