

Set the PC modem to 9600 baud

When you try to establish a dial-up connection between your PC and an eWON with GSM modem (GSM-Data) then it may be required to force the modem of your PC to 9600 baud.

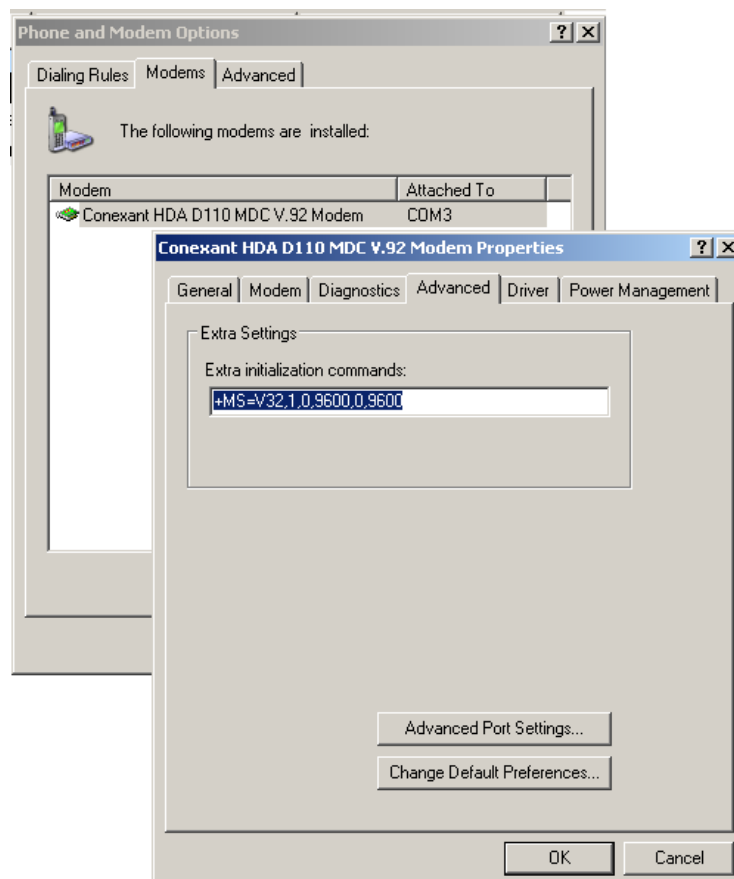
To do this proceed as follows:

- In the Control Panel open the Phone and Modem Options page.
- Click on the Modems tab, select your modem and click on the Properties button
- Click on the Advanced tab, and enter the AT command in the Extra initialization commands field as shown in the picture hereunder.

The AT command to use is depending of the modem type installed on your PC. So please refer to the user manual of your modem to get the correct AT string.

But most of the time the AT command to use is one of the following:

- +MS=32,0,9600
- +MS=V32,1,0,9600,0,9600



Revision

Revision History

Revision Level	Date	Description
1.0	06/10/2009	Creation of document

Document build number: 12

Note concerning the warranty and the rights of ownership:

The information contained in this document is subject to modification without notice. Check <http://wiki.ewon.biz> for the latest documents releases.

The vendor and the authors of this manual are not liable for the errors it may contain, nor for their eventual consequences.

No liability or warranty, explicit or implicit, is made concerning the quality, the accuracy and the correctness of the information contained in this document. In no case the manufacturer's responsibility could be called for direct, indirect, accidental or other damage occurring from any defect of the product or errors coming from this document.

The product names are mentioned in this manual for information purposes only. The trade marks and the product names or marks contained in this document are the property of their respective owners.

This document contains materials protected by the International Copyright Laws. All reproduction rights are reserved. No part of this handbook can be reproduced, transmitted or copied in any way without written consent from the manufacturer and/or the authors of this handbook.

eWON sa, Member of ACT'L Group