

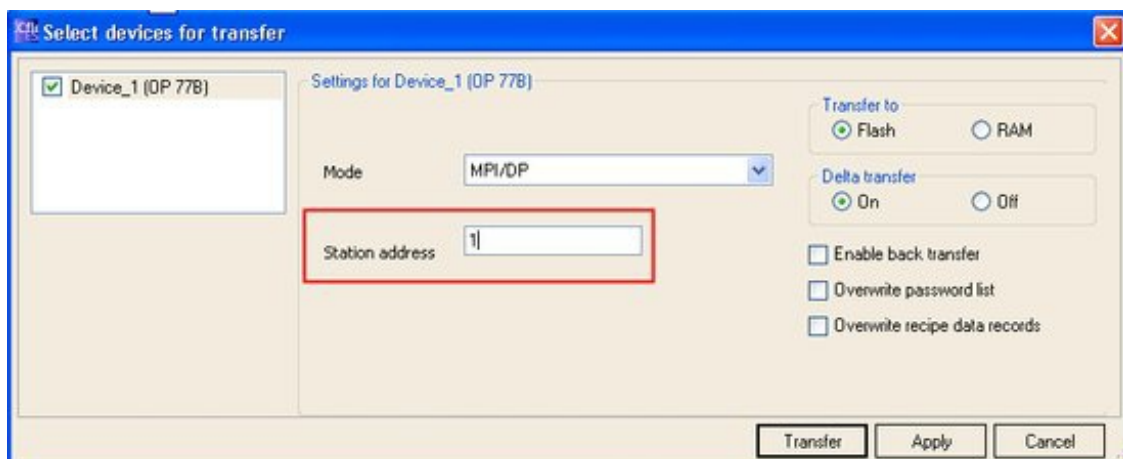
Issue when downloading WinCC flexible® project using eVCOM

If WinCC flexible® displays following error message during the download process

"Download is not possible. The "version of the device" in your WinCC flexible project and the version of the operating system of the device are not compatible ..."

then check if you specified in WINCC flexible® the correct MPI/DP node address for the download.

You must specify the MPI/DP address of the Siemens Panel. See picture hereunder. If you specified the eWON MPI/DP address or the MPI/DP address of a PLC, then the error message will be displayed.



SIMATIC® and WinCC flexible® are registered trademarks of Siemens.

Revision

Revision History

Revision Level	Date	Description
1.0	13/10/2009	Creation of document

Document build number: 4

Note concerning the warranty and the rights of ownership:

The information contained in this document is subject to modification without notice. Check <http://wiki.ewon.biz> for the latest documents releases.

The vendor and the authors of this manual are not liable for the errors it may contain, nor for their eventual consequences.

No liability or warranty, explicit or implicit, is made concerning the quality, the accuracy and the correctness of the information contained in this document. In no case the manufacturer's responsibility could be called for direct, indirect, accidental or other damage occurring from any defect of the product or errors coming from this document.

The product names are mentioned in this manual for information purposes only. The trade marks and the product names or marks contained in this document are the property of their respective owners.

This document contains materials protected by the International Copyright Laws. All reproduction rights are reserved. No part of this handbook can be reproduced, transmitted or copied in any way without written consent from the manufacturer and/or the authors of this handbook.

eWON sa, Member of ACT'L Group